



SCHOOL OF ISOLATED & DISTANCE EDUCATION

INSIDE NEWS



IN THIS ISSUE

- ▶ Inside SIDE 3
- ▶ In Focus 4
- ▶ Arts & Technology 6
- ▶ English 8
- ▶ HASS 10
- ▶ HPE 12
- ▶ Languages 14
- ▶ Learning Support 16
- ▶ Mathematics 18
- ▶ Science 20
- ▶ Online Teaching & Learning 22
- ▶ Primary K-6 24
- ▶ Resource Centre 26
- ▶ Student Services & Careers 28
- ▶ Regional Visits 30
- ▶ Workplace Learning 32
- ▶ Students In Focus 34
- ▶ Calendar 36
- ▶ Social Media Info 36



Cover photo: Kandimal Remote Community

VISION STATEMENT

“ **SIDE** is...
a vibrant
online
learning
community,
committed to
innovation
and excellence.



Noel Chamberlain
Principal

The celebration of the Centenary of Distance Education in 2018 provided an opportunity for us all to reflect on 100 years of quality education provision to rural, remote and isolated students in WA. In 2019, some of the projects commenced last year will continue, including expanded ways of informing the SIDE school community about the various activities in which students and teachers are involved.

This year there is an increased emphasis on communicating to the community through the SIDE website, social media and this revamped newsletter. In addition, SIDE will continue to send general notices through our new service, Parent Connect. Parent Connect also allows parents and caregivers to find information about their child's teachers, courses and results (for mainstream courses).

I welcome all new and continuing students to SIDE. As with all schools, the start of the year brings students into contact with new teachers and new ways of working. This can sometimes be quite challenging, however, please remember that the SIDE teachers and secondary student coordinators are available to help students and parents; they are only a phone call or email away.

SIDE teachers have been focused on the online delivery of lessons and resources through Moodle and the comprehensive rollout of Webex, SIDE's new web conferencing software. This has required significant professional learning by teachers, and patience by all, as SIDE moved all lessons to the new software platform. In addition, many teachers have been visiting students in rural locations across the state. Teachers endeavour to visit as many students as possible, but not all students are able to receive a visit every year.

Please take the opportunity to read in this newsletter about the places in which our students work, and their activities in the various learning areas and departments across the school. Also, you might like to visit the SIDE website and follow us on social media for up-to-date news.

PARENT CONNECT



SIDE encourages parent engagement in their child/ren's schooling.

Parents Connect allows parents to access:

- The School Space, where previous notices are stored.
- The classes in which your child is enrolled.
- Assessment and course outlines for each mainstream secondary subject in which your child is enrolled.
- Assessment results for mainstream secondary subjects.
- Interim and semester reports for your child.

Login to Connect at
connect.det.wa.edu.au

More details can be found on [our website](#).

Please note that If you have any questions or concerns regarding your child's progress at SIDE, you are encouraged to contact your child's teacher by telephone or email at any time.

If you have misplaced your P number or if you have any questions about the introduction of Connect at SIDE, please contact Justine Daly, Deputy Principal, on Justine.daly@education.wa.edu.au or 9242 6300.

PLAN FOR SUCCESS In Terms 2, 3 & 4 at SIDE

Students have now completed Term One of 2019 at SIDE and have received a Term One Interim Report.

Read the report and take some time to make adjustments for the rest of the year.

► ACADEMIC PROGRESS

Discuss subject or course progress to date with the student's SIDE teachers, particularly if there are any surprises.

► VISIT SIDE

- Students (and parents) should aim to visit teachers at SIDE early in the year. Meeting teachers face to face and seeing where they work is an important part of establishing a successful working relationship. This, of course, may not be possible for some students.
- Day visits should be discussed with the student coordinator who will make the necessary arrangements.
- Enquire about SIDE's accommodation village for schools and home based family bookings.



“ Tips for
Parents,
School
Supervisors
&
Students...”



► BE ORGANISED

Composite work completion calendar templates are available from Student Services who can show you some terrific examples of how other parents/school supervisors organise students to experience success.



► COMMUNICATE REGULARLY

- Stay in contact with teachers and your student coordinator. Ask questions and stay involved.
- SIDE teachers, Student Services, and Online Teaching and Learning teams have a wealth of experience and knowledge to share.
- SIDE staff can assist with your questions and make you aware of any opportunities that may be available for your students.

► FIND OUT ABOUT SIDE'S LIBRARY/RESOURCE CENTRE

Talk to the library staff about what hard copy and online resources and services are available.

► TEACHER VISITS

Schools and families are welcome to request a visit by their teachers. SIDE will endeavour to visit as many students as possible within our resources.

Communication
Is the key for
Success at SIDE ”

▶ TECHNOLOGIES TEAM



From left to right: Des Coles, Angela Melia, Tim Reger (HOLA), Richard Wu, Mark Rotondella, Rose Lee, Neil Berry, Kat Popp, Phil Garnett, Rachel MacFarlane, Anthony D'Alfonso, Alison Grabowski, Michelle Gauntlett, Pauline Abordi, Sharon Cutten, Jennifer Dobner, Dylan Reid, Denise Abordi-James.

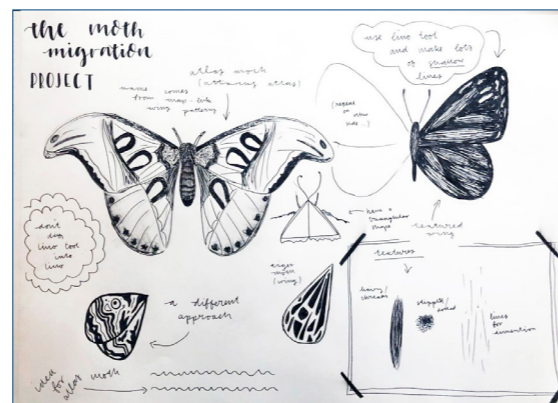
▶ THE MOTH MIGRATION PROJECT

Year 10 Visual Art students are participating in the International Moth Migration Project (MMP). This is the second time SIDE students are participating. The exciting thing about this year's exhibition is that it will be in Gympie, Queensland!

"The Moth Migration Project founded by Hilary Lorenz, 2016, is a crowd-sourced collection of hand printed, drawn and cut paper moths exhibited in multi-sensory installation. Choosing moths, a nocturnal pollinator, as the vehicle for cross-pollination and international exchange." Hilary's goal was to create and attract at least 40,000 moths. The number derives from the number of moths a grizzly bear may eat per day prior to hibernation. The moths have become a symbol of the global network with over 15,000 submissions from 26 countries.

The number of contributions now far exceeds this initial goal. Students, through their research, have found out about the recent decline of the Bogong moth due to drought and climate change.

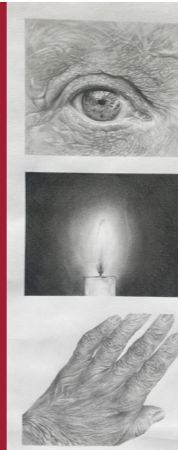
Students are researching moths local to their area, drawing and adapting a design for a lino print. The class has already been exchanging ideas between them from their various locations in Webex and Moodle, the creative process of making art in this case is already a migration and cross pollination of ideas from Indonesia to Tasmania, and all over WA. Each student will print an edition of five moths to be sent to Gympie to be part of the second Moth Migration Project Exhibition. Moths have been printed on paper all over the world and will be catalogued and installed on gallery walls and ceiling in a giant geographically accurate web.



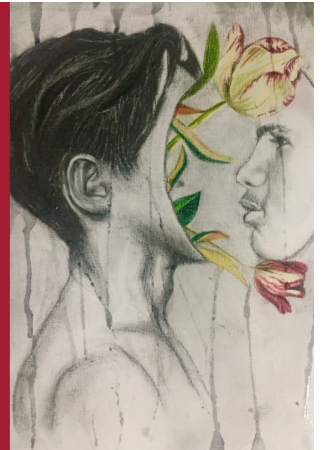
▶ YEAR 12 STUDENTS GOING ABOVE AND BEYOND

The number of Year 12 Visual Arts ATAR students this year has increased to 24 and the talent in this group is outstanding. The featured two artists today are from very different backgrounds.

Nikki S is an external enrolment from a metropolitan school and has excelled doing her art mainly at home and after dark. She has found inspiration from photos she took of the poor in India. The humanity and tenderness in her drawings are compelling and exquisite.



Leia S is studying ATAR Art from a remote primary school of Onslow. She has developed her drawings and ideas from her surroundings and shows us Indigenous culture and life from first hand. Her poignant and carefully crafted compositions are a fabulous exploration of Australia's first people.



Both students have continued from Year 11 and are really forging out their own styles and techniques.

▶ DESIGN & TECHNOLOGY

2018 saw the completion of the planned upgrade of the Design & Technology workshop facilities at SIDE. This has enabled the Technologies learning area to deliver the best learning outcomes for our students, and ensure current and future needs of SIDE students are addressed. The collaborative efforts of SIDE's technology teachers, administrators, ICT, OTL and innovative schools is proving to be a success.

SIDE now delivers real time lessons from the workshop via Webex to teach Design and Technology skills to schools that have dedicated facilities but are unable to access specialist teaching staff. Students at Meekatharra DHS are achieving success in the development of woodwork skills with the assistance of motivated and skilled Aboriginal Education Assistants.

SIDE is looking forward to expanding the model to other schools.

▶ SYNERGY SCHOOLS SOLAR CHALLENGE

The Year 8 ballet students who enrolled in STEM in 2018 achieved a remarkable result in the Synergy School Solar Challenge coming 3rd in the north metropolitan competition. The 2019 STEM students are hoping to match or improve on this result. SIDE's internal competition identified a slick team who will now compete against other north metropolitan schools with the goal to compete in the state finals at Optus Stadium.

The STEM students have enjoyed the problem based learning while discovering a range of Science, Technology, Engineering & Maths concepts. SIDE has unique facilities that allow our students to engage in discovery based learning that the solar challenge presents.



Teacher Des Coles instructing students via Webex video conferencing facilities in SIDE's D&T workshop.



► OFF TO A GOOD START 2019

Welcome to our new and continuing students, and their families. The SIDE English Learning Area team were thrilled with the efforts and achievements of our students in 2018 and have begun this year with renewed dedication and commitment. Our key focus remains promoting equity and excellence and providing opportunities for all students to reach their full potential.

► THE 2019 ENGLISH TEAM



Back row from left: Craig Campbell, Silvana Patorniti, Susan Cullen, Cathy Lamers, Peter Barker, Jenny Crowe, Front row from left: Esperanza Stein, Linley Taylor (HOLA), Lucy Brookes-Kenworthy, Donella Grieco. (Amanda Malseed absent).

► TERM 1 - KEY FOCUS ON READING

Our year begins with English students at all year levels focusing on consolidating and extending their reading skills. We nurture reading skills and enjoyment supporting students from diverse backgrounds and with different needs.

- English make available engaging reading resources, including ebooks, audio books and graphical resources.
- With the Library Resource Centre, Year 7–10 students gain access to exciting discussions about books via our Wide Reading Program.
- The Authors Online Program, a collaborative program with the SIDE Resource Centre, provides students with regular opportunities to speak with published authors using Webex Classroom. Brendan Ritchie's session in Term One is discussed elsewhere in this newsletter. He worked with senior students to build their creative writing skills.

► OUR COMMITMENT TO ON-GOING PROFESSIONAL DEVELOPMENT

Members of the SIDE English team celebrated the start of 2019 by attending a professional learning event presented at the Perth Writers Festival. Authors Sisonke Msimang, Trent Dalton, Carly Findlay and Future D Fidel presented a thought provoking panel discussion about how life experiences can be shaped into narratives. To hear from published authors about the choices they make in constructing texts provides valuable insights that we are able to share with our students, particularly those in the Senior Secondary years.



The English Team at The Perth Writers Festival L-R: Amanda Malseed, Silvana Patorniti, Susan Cullen, Cathy Lamers, Jenny Crowe, Donella Grieco, Peter Barker and Linley Taylor.

► WELCOME

Two returning teachers have joined our team.



Lucy Brookes-Kenworthy is teaching Year 7 English and Year 12 General English.



Amanda Malseed has returned to SIDE after travelling with her family. She is teaching Year 12 ATAR English

► FOCUS AREAS FOR 2019

In 2019, the English Learning Area's direction continues to be motivated by our genuine concern for the well-being of all students in accordance with the Department's high expectations of success for every student in

every school. From this key concern, the focus continues and develops:

- Literacy
 - High Quality Teaching
- Further details of our activities in these focus areas will appear on the SIDE website and in newsletters throughout the year.

▶ 2019 HASS TEACHERS



Front L-R: Tracy Sterling (Geography, HASS 7-10), Valda Puls (Economics, HASS 7), Patti Morgan (Geography, HASS10)
 Back L-R: Adele Clark (Geography, HASS 8), Ros Keron (History), Meredith Southee (History, HASS 8 and 10), Lindy Precious, (Politics and Law, Geography, HASS 8), Felicia Harris (HASS10), Peter O'Neill (HOLA, History, HASS9)
 Sherry Walker (Economics, Politics and Law, HASS10) absent

▶ HASS CURRICULUM

In years 7-10 students focus on the concepts, skills and knowledge related to four subjects. These are taught in a specific sequence.

- Term 1 - History
- Term 2 - Economics / Business
- Term 3 - Geography
- Term 4 - Civics and Citizenship

In Years 11 and 12 the courses are more specialised and are studied in depth: Economics, Geography, Modern History and Politics and Law

SCHOOL VISITS

HASS staff regularly visit our home and school based students. This term we have visited students in regional and metropolitan schools.

Are you new to SIDE?

Here is some good advice from students who succeeded in overcoming their initial fears when commencing SIDE in 2018. One Student advised the following Ten Top Hints:

1. Always listen to what the teacher tells you.
2. Keep up don't fall behind.
3. Attend as many lessons live as possible.
4. Take precise notes straight from day one. Revisit these notes.
5. Don't be afraid to ask for help.
6. Take a step beyond and study. Revise as much as you can. Don't limit yourself to only what's suggested.
7. Re-watch recordings.
8. Don't stress yourself always remain calm.
9. Put in as much as you can. Don't be afraid to speak.
10. Do your overall best.

▶ WE REMEMBER ANZAC

ANZAC Day 2019 is commemorated during the school holidays in April. We study this important topic as part of our HASS Curriculum. You can access ANZAC History online at discoveringanzacs.naa.gov.au. At this Australian Government National Archives of Australia website you can:

- **View** original service records for Australians and New Zealanders who enlisted in World War 1.
- **Find** Anzacs from your local area.
- **Contribute** biographical information, a life event or a story to an Anzac's profile.
- **Explore** videos, an interactive timeline, and resources that align with the Australian Curriculum.
- **Uncover** the stories of everyday Australians who contributed to the war effort.



Another useful source of ANZAC information is the book "No Less Worthy". This book documents the significant contribution that Western Australian Aboriginal men and their families made to the Australian World War One war effort. Copies are available from our Resource Centre and local libraries.



HASS ENCOURAGES STUDENTS TO PARTICIPATE IN ANZAC DAY CEREMONIES.

It's been a fantastic start to the year as we implement new engaging Moodle courses across both lower and senior secondary. The feedback from students so far has been overwhelmingly positive and the amount of work already uploaded has been pleasing.

BRONWYN RAKIMOV (HOLA)

I returned from Long-Service-Leave in Week 6 and thank Mary Noonan for taking my classes prior to this time. This year ...

- **Year 10** Dance students come into SIDE for their weekly classes and are working well. Other Year 10 students are logging into their weekly Webex lessons. The current course focus is on community health after the completion of culture and identity. It is important for all students to keep up with their workbook entries.
- **Year 7** students have been working on dimensions of health, the challenges of and the changes at puberty and also looking at ways of coping with these changes. The students are working well using Webex and many are completing workbook requirements.
- There will be close monitoring of all courses to progress any adjustments and or modifications that may be required.

STAFF 2019



KIRSTY O'HALLORAN

In my classes this year ...

- A new course design in Year 12 ATHEA has been very well received by the students. Students are currently focusing on how to identify and measure health discrepancies within Australia and across the globe.
- **Year 12** General Health is off to a flying start with the first two tasks already submitted. Students have engaged with identifying causes of low health status.
- The **Year 10** students have had an eye opening start to the year focusing on culture and identity and how to be critique uses of media.

Upcoming Regional visits:

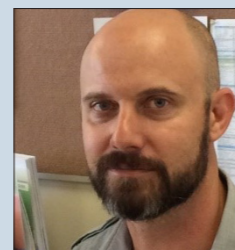
- Eaton • Exmouth • Kununurra



SHAUN REDDING

- The **Year 11** ATAR courses have been refined to allow for the students to have greater ease of navigation. There is a strong focus on exam preparation. They are presently studying the determinants of health and the health inquiry process.
- The **Year 11** General students have been focusing on the dimensions of health and health promotion. They have completed their first test and are preparing for their second task where they will be creating a health promotional tool that addresses a lifestyle factor.
- The **Year 8** course has a new look which is visually engaging for the students. They have just completed their first task concerning multiculturalism and prejudice and have started discussing healthy relationships.

Shaun has regional visits planned for Term 2: Kununurra, Dongara, Jurien Bay.



JANE BOURKE

The **Year 9** Dance Students have had a great start to the year with their new look Moodle course. A welcome addition to the course this year is the online workbook which allows all students to upload



weekly activities to an online portfolio. It's been pleasing to see the increase in completed tasks and this has helped students gain a greater understanding of the concepts in their first topic: Identity. The assessment task involved students creating a conference presentation and some outstanding work was submitted.

What is IDENTITY?

- Identity is the way you see yourself and characteristics, attributes and skills you have.

Some factors that can influence identity includes but is not limited to:

- o Family
- o Friends
- o School
- o Religion

Sonique S.

miakhalifa

Jigveshvar R.

(2) Three social media examples
(e.g. campaigns, advertisements, general posts, celebrity blogs, selfies, friend comments, etc.) that reinforce negative stereotypes.

1. Gender stereotype advertisement; https://www.youtube.com/watch?time_continue=29&v=0CizSod0CE
Yorkie's 'It's Not for Girls' campaign, which began in 2001, was brand defining. It ran throughout the 90s then a 2006 version was jokingly made in pink, released exclusively for women. If Yorkie was still running the campaign, it would probably fall foul of the new rules, because it is an ad that emphasizes the contrast between male and female personality traits.
2. Body image poster; It's unsurprising that a site which encourages marital betrayal can occasionally hit below the belt with its ad campaigns, but the example still comes as a shock. "We call it as we see it" hovers above two women - one thin, one fat - laid out in lingerie. Naturally, the bigger model has a big red 'X' next to her which intern creates body image crisis.
3. Racist Stereotypes; https://www.youtube.com/watch?time_continue=3&v=j_u_OD1_z
In the ad, a vigilant bartender spots a faraway female patron gazing disappointingly at a wine glass. Quickly, he opens a beer bottle and slides it down the bar. On its journey over multiple surfaces, the bottle skates past two black women and a black man before stopping at the wine glass. The phrase "sometimes, lighter is better" flashes on screen before the woman, who has lighter skin, inspects the bottle.

Millie M.

Vogue Magazine Covers

On all of these magazine covers you can see skinny women that are models but there faces get edited so much as well as wearing a lot of makeup. Magazine cover editors are changing people faces so that they look like some one that they aren't. In the image you can see that only girls are used for the front covers in most of the magazines that VOGUE produce and most of these people are a more tanned skin color unless they think that the famous people with darker skin will sell there magazine.

Ella M.

HANDY HEALTH RESOURCES

Useful websites to help you find up-to-date trustworthy health information. Many have excellent ideas about supporting friends, connecting with your community, supporting yourself and how to get immediate support when needed:

- <https://www.youthbeyondblue.com>
- <https://www.getthefacts.health.wa.gov.au>
- <https://au.reachout.com>

The Languages Department at SIDE this year consists of 17 language teachers across French, Indonesian, Italian, and Japanese, delivering language programs to around 600 students across Western Australia and around the world. This year the Western Australian curriculum for Languages will be implemented in Years 3 and 4 and we are using new course material produced at SIDE for all of our primary classes. Our ATAR enrolments have increased this year and we wish all of our secondary students good luck for the year ahead. In 2019 we are lucky to welcome 4 Language assistants to our department and look forward to the arrival of our Hyogo Exchange teacher from Japan in April.



Front L-R: Kathy Lamberto (HOLA), Anthony D'Alfonso, Flavia Emili, Bill Jelfs, Richard Charlwood, Kim Daymond (HOLA), Michael Boyle, Anne Becker, Denise Scott, Chavaune Duckett, Karen Worth, Stacey Mylonas, Elisa Higgins, Arielle Fernandes, Yuka Oxby.
Not present: Sandra Jackson, Brigitte Blunsdon, Halina Sobkowiak, Veronika Popp.

▶ ITALIAN

Welcome Flavia Emili to our Italian team.

Buongiorno! My name is Flavia Emili. I am 27 years old and I'm from Castel Gandolfo, a tourist village located 20 minutes from Rome. It is well-known for the Vatican Gardens and it is the summer residence for the Popes.

I love travelling and I am always open to learning more about new cultures, traditions and languages. Once I graduated as a Primary School Teacher in 2016, I moved to Perth to follow my dream of being part of the Australian education system. I see this beautiful country as a place where I feel I belong and I would like to live here for the rest of my life.

Teaching is my greatest passion and I feel honoured to be hosted by SIDE as a Language Assistant of Italian. I think this is a wonderful opportunity as I get to work not only at SIDE but also at two other schools in Perth. I will support students by sharing my knowledge, experience and culture of me and my home country.



▶ INDONESIAN

Welcome Kagumi Parasya. Halo! My name is Kagumi. I am from Jakarta. As an Indonesian teacher assistant, I've been assigned to two schools: SIDE and Butler Primary School.

I graduated as a Graphic Designer in 2011. After my graduation, I worked mostly in the creative industry. For the last 3 years, my title was Voice Over Talent which required me to understand, write, read and brings the words alive, both in the Indonesian and English language.

Getting an opportunity to be a Language Assistant in Perth, reminds me how much I want to work in the education sector.

Working at SIDE is amazing! Not just the facility (the recording room and studio were impressive), but the wonderful integration between teachers, schools and students. At SIDE, I am focusing on students' real-life cultural understanding and clarity of pronunciation. I also believe learning language should be fun. They can find their interest and practise through repetition, because training the brain is the same as strengthening muscle memory.



▶ FRENCH

Welcome Noémie Serrano:

"Bonjour! My name is Noémie. I am a 26-year-old girl from Normandy, France. I come from a city called Rouen which shares the river La Seine with Paris. I love spending my free time travelling, learning languages and playing ukulele.

I graduated from University in 2018. I studied a Master in Teaching French as a Foreign Language. After my graduation, I spent a year working in the Alliance Française of Rouen. During this year, I got the opportunity to teach adults as well as kids from all over the world, and it confirmed my choice of studies. Before studying this Master I've lived in Argentina and Spain, and am now discovering Australia and enjoying it so far!" Noémie



▶ JAPANESE

Welcome Yuka Oxby to our Japanese team.

Konnichiwa! My name is Yuka. I'm from Hokkaido, the northern island of Japan. My hometown is a cool place even in summer so I am proud of myself for surviving the super-hot summer (for me) in Perth. I like reading books, watching TV dramas, and playing the piano. I also like camping amongst nature. I love Australian nature except for the big cockroaches. I have been living in Perth for two and a half years but I'm still surprised by new things every day and I enjoy it very much. I'm very happy to be a part of the team at SIDE. It is very different to when I was a teacher in Japan. I really enjoy helping students and talking with them in Japanese. I hope I can teach the students to communicate in Japanese and lots of interesting things about Japan through the lessons. Yoroshiku onegaishimasu!



The Learning Support Team would like to welcome back previous students, parents, caregivers and partnership schools as well as extend a welcome to new students who have accessed Learning Support for the first time in 2019. The Learning Support team provides a range of educational programs across learning areas. The programs are individualised to allow for students to achieve success based upon their particular needs and barriers that may be present in their education.

LEARNING SUPPORT TEAM



L-R: Richelle Troode (HOLA), Susan Taylor, Shekiah Adams (EA), Amy Hamilton, Judith Williams, Miranda Free, Mary Noonan, Jo Duczynski (EA), Robin Williams

Although student enrolments are lower than previous years, it has been a very busy start to the year and teachers in Learning Support have already been on a number of regional visits. More regional visits are planned for Term Two.

▶ NEW TEACHING AID

The Learning Support team is using new interactive cameras to engage and support our students. These cameras give the teacher the ability to share in real time, how to carry out an experiment, read a text or interpret an image. The team sees this resource as a useful tool to assist our students on their learning journey.



▶ ASDAN

This term we have had many new enrolments. We currently have the following ASDAN Courses running with students working towards their accreditation and certificates:

TOWARDS INDEPENDENCE:

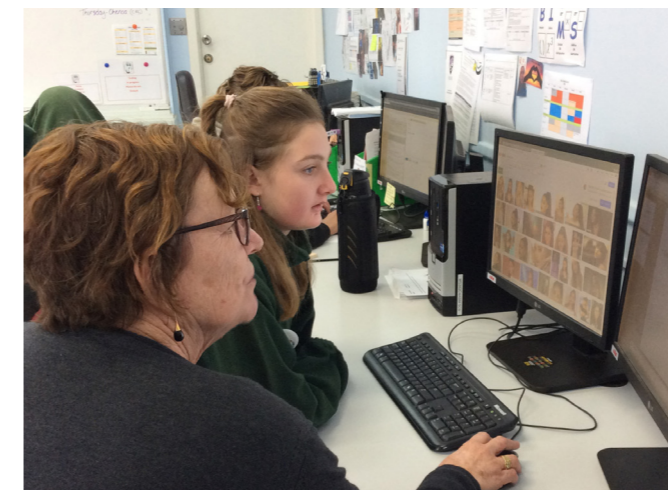
- Independent Living
- Meal Preparation and Cooking
- Personal Safety
- Work Awareness
- Photography and Multimedia
- Using ICT

TRANSITION CHALLENGE:

- Knowing How
- Making Choices
- Feeling Good
- Moving Forward
- Taking the Lead

ANIMAL CARE WORKRIGHT HAIR & BEAUTY NEW HORIZONS

We would like to thank all the students, parents, Education Assistants and SIDE supervisors for their help and support in collecting evidence and work samples for our student's portfolios.



Sue Taylor working with ASDAN student at Mukinbudin

STUDENT WORK IN FOCUS

Below is a fantastic piece of writing from Mitchell, a Year 8 student.

Over the school holidays our dog Tilly gave birth to four pups. Tilly is one of our working dogs, she is three years old and this is her first litter. Tilly is a kelpie cross blue heeler and the father of the pups is a blue heeler. So far, she has been an ok mother.

The day the pups were born it was 47 degrees and we were keeping an eye on her. The first two pups that were born was a girl and a boy and it was fairly quick. The next two were born six hours later. After they were born Tilly bit the umbilical cord and licked them clean. Then she got a bit restless because of the heat and she didn't want to feed them, so we moved the pups inside and Tilly followed us. We made a nest for Tilly and the pups. Tilly was much more comfortable inside and she was letting her pups feed now that it was cooler.

The pups are about eight weeks old now, they are all healthy and very active. Soon three of the pups will be going to new homes and I have chosen one to keep. The one I picked is a female and the most active and friendliest one. Tilly doesn't need to look after them as much now, she can now go for swims in the water hole.





L-R: Ying Sturma, Diya Mehra Soni, Harry May, Carmel Rankin, Greg Piggott, Anne Paull, Kim Winton, Karen Loreck, Ron Evans, Jim O'Neill (HOLA)

Have you just started at SIDE?

Look at the Moodle page for your maths course and follow the information in the Getting Started section. Contact your teacher as soon as you can and remember the times of your lessons. You will receive a week by week calendar for your course. Use it to find out where you are and get started as soon as you can.

Just remember to keep in touch with your teacher and you will soon get used to the school.

Good luck and enjoy your time at SIDE Mathematics.

STAFFING FOR 2019

In 2019 our teaching and learning staff are:

Ron Evans	Y11 Specialist and Y11 & 12 Foundation
Ying Sturma	Y12 Specialist and Y8
Greg Piggott	Y12 Applications, Y10 and Y9
Ravinder Patel	Y11 and Y12 Methods, Y9
Miika Rautavirta	Y11 and Y12 Essentials, Y9
Lorraine Backhouse	Y11 Essentials, Y7
Anne Paull	Y12 Applications, Y11 Methods, Y8
Kim Winton	Y11 Applications, Y7
Karen Loreck	Y7 (Student coordinator)
Harry May	Y11 Applications, Y12 Essentials, Y10
Carmel Rankin	Y11 Applications, Y11 Essentials, Y10
Diya Mehra Soni	Y11 Methods, Y11 Essentials, Y8

NAPLAN PREPARATION

As many Y7 and Y9 parents and students will know, NAPLAN testing will happen in WA early in Term Two. Your SIDE Mathematics teacher has already given you lots of tips and strategies to help you with test questions and there are extra questions and help in the Moodle pages of your course. If you have a specific worry, then tell your teacher and we will do our best to help.

Good luck with NAPLAN.

REGIONAL VISITS

KIMBERLEY

Mathematics department staff have been out and about visiting as many students as we can. This term we have had visits to the Kimberley, Goldfields, the South West, the Midlands and the Perth Metro area. There are other visits happening over the next few weeks.

Your teacher will let you know when they are planning to visit but don't be bashful – if you think you would benefit by spending time one to one with your teacher then tell us about it. We will always do our best to help you.

Visits so far:



6th March 2019 – La Grange Remote Community School in Bidyadanga (Kimberley)

GOLDFIELDS

Year 11 and Year 12 students are using their Maths Foundation Birak Workbook and looking at their Grade Rubrics. In this course we use Noongar seasons as a timeline for our Workbooks. The names of the Noongar seasons are Birak, Bunuru, Djeran, Makuru, Djilba and Kambarang.

This group of students ranged from Y7 to Y11. Teachers spent time with groups and individuals to help answer questions and make sure everyone was fully up to date with their work. And as you can see, there was "sum" fun as well.



Students from Leinster (Goldfields) welcome their SIDE teachers

STAFF



Suri Naidoo



Natalie Cooper



Alex Berentzen



Paul Tournay



Gerry Nolan



Julie Clark



Jim Marshall



Owen Randell



Dianne Saunders



John Stritof



Ai Kamiya-Murray



Gillian Hardingham

SURI NAIDOO (HOLA)

Year 12 Biology, Year 11 Psychology
Monday-Friday

GERRY NOLAN

Years 11 Chemistry, Year 11 Physics, and Year 8 and 10 Science
Monday-Wednesday

DIANNE SAUNDERS

Years 11 and 12 Biology, Year 11 Human Biology and Years 7 and 10 Science
Monday-Friday

NATALIE COOPER

Year 12 Chemistry, Year 12 Human Biology, Year 12 General integrated Science and Year 7 & 10 science
Monday-Friday

JULIE CLARK

Years 11 and 12 Human Biology, and Year 7 Science
Monday, Wednesday & Thursday

JOHN STRITOF

Years 11 and 12 Human Biology and Year 8 and 9 Science
Monday-Friday

ALEX BERENTZEN

Year 11 Chemistry, Year 12 Physics, Chevron: PCiE, Year 8 and 9 Science
Monday-Friday

JIM MARSHALL

Years 11 and 12 Biology, Year 11 Integrated Science, Year 9 and 10 Science
Monday-Friday

AI KAMIYA-MURRY

Laboratory technician
Monday -Friday

PAUL TOURNAY

Years 11 & 12 General Human Biology and Years 7 & 8 Science
Monday-Friday

OWEN RANDELL

Years 12 Physics, Year 11 Chemistry, Year 11 General Integrated Science, Year 9 and 10 Science
Monday-Friday

GILLIAN HARDINGHAM

Year 11 and 12 Psychology
Tuesday - Friday

Welcome back to all our former students and a special welcome to all students new to studying Science through SIDE.

We hope you've all settled into your studies this year and we look forward to sharing a successful 2019 with you. I would like to commend the students for settling in so quickly to using Webex as the platform for their online lessons.

The Science Learning Area staff are a diverse group of very experienced teachers who are here to help you succeed in your studies. Make use of your teachers by maintaining regular contact and asking them for help when required.

A very important part of your success with us at SIDE is to communicate. This is why it is important to get to know your teachers and make sure you communicate with them regularly.

The subjects/courses for each teacher are listed in the table on page 20. Some of them do not work full-time, and their starting and finishing times vary, so make sure you take note of this. If you can't contact your teacher immediately, they may be teaching a class or meeting with students. You can either leave a message on their phone message bank or send them an email – they will get back to you as soon as they can.

REGIONAL VISITS

The Science staff have travelled far and wide this term to visit as many students as possible. Here are some of the places we visited:

FEBRUARY

- Alex Berentzen Armadale SHS
- Alex Berentzen & Natalie Cooper Port Hedland SHS

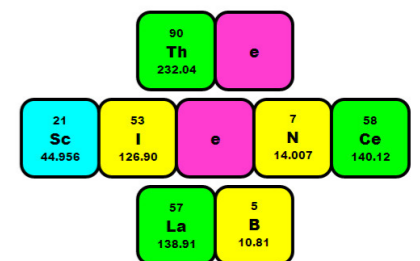
MARCH

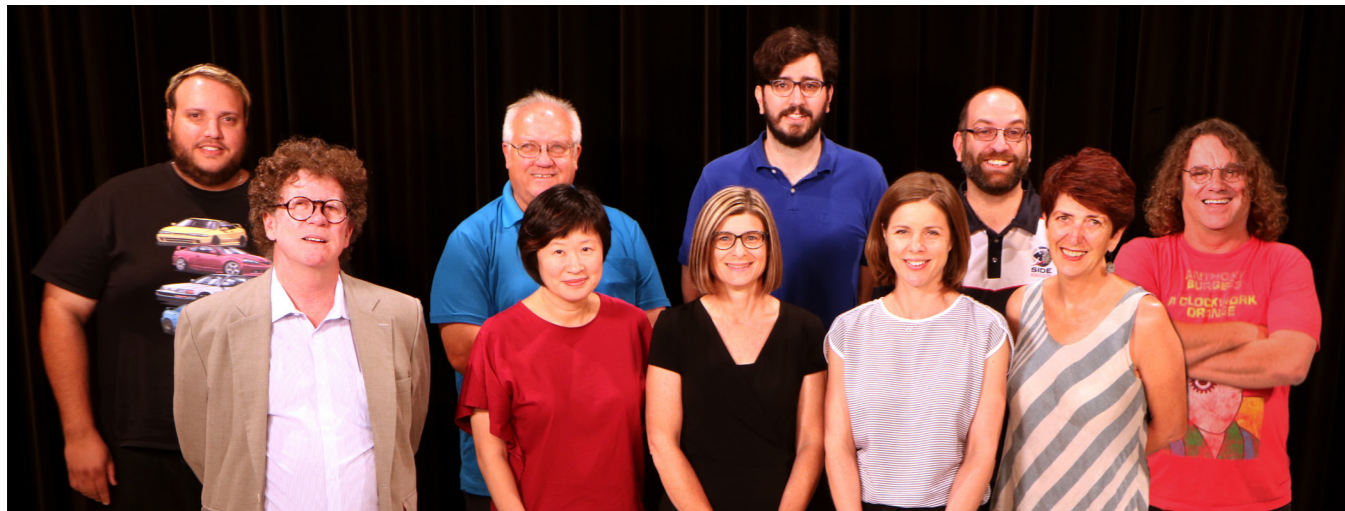
- Gillian Hardingham & James Marshall Exmouth DHS
- Paul Tournay Leinster and Laverton
- Suri Naidoo North Albany SHS
- Diana Tomazos Mount Barker CC

SCIENCE LAB

Interesting facts and figures help us deliver engaging Science courses and enable us to introduce students and their families to the realities of everyday Science. Not only are these facts presented in the individual courses, but the "Science Lab" in Moodle is constantly updated to bring you details of all the latest and best happenings in Science today.

If you want to know more about these new fragments of the wonderful world of Science, keep an eye on "Science Lab" and take the time to ask the SIDE student in your family!

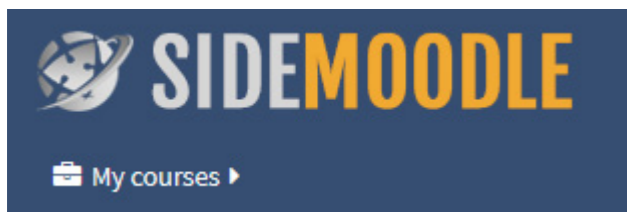




ICT (Back L-R): Steve Jancso, Wayne Tentori, Matt Reverzani, Gavin Rogers (ICT Manager)
 OTL (Front L-R): Ross Manson (Head of OTL), Gina Lau, Narelle Carlon, Veronika Popp, Cathy Scott, Steve Dans

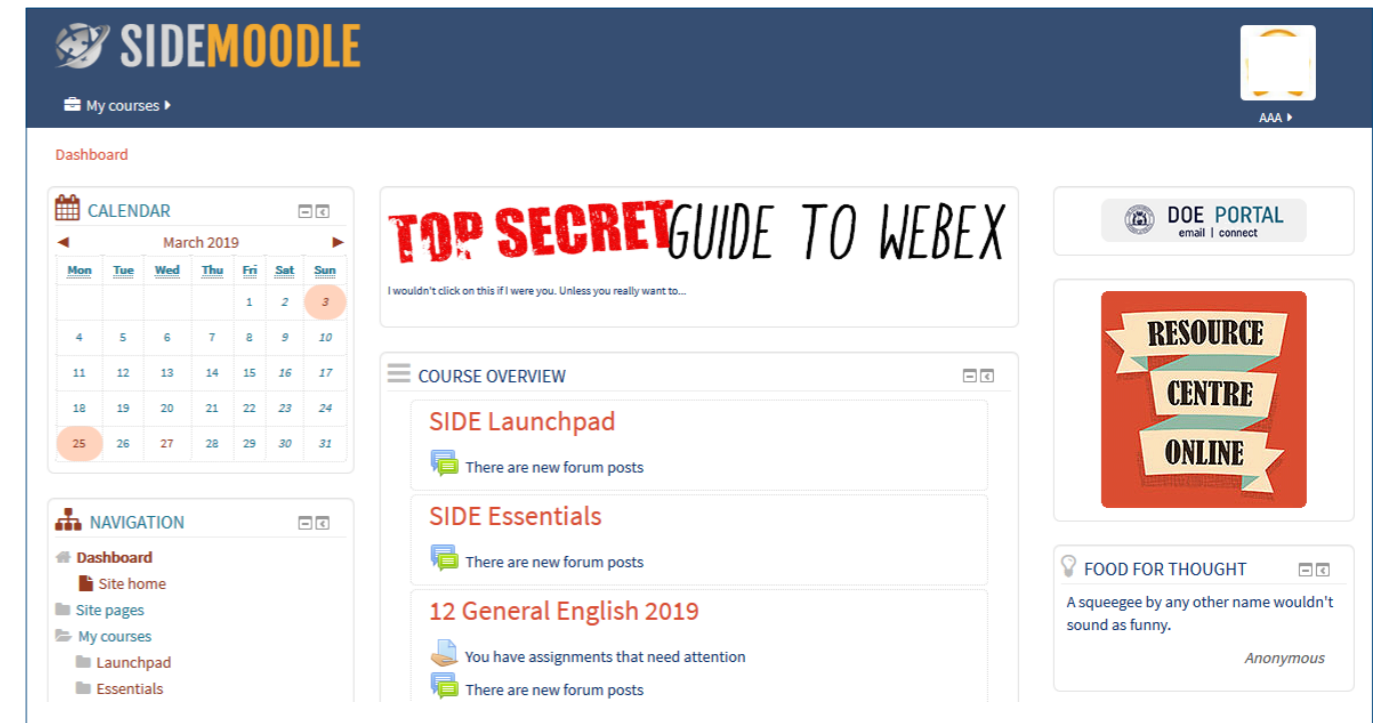
The OTL and ICT teams support SIDE staff and students in using technology so that teaching and learning can occur at a distance. The OTL team consists of experienced, practising teachers and specialist support staff. Many of the systems for delivering online content and media are managed and supported by the OTL team while the ICT team work behind the scenes. Most OTL team members have multiple roles in the school.

Most teaching and learning at SIDE happens using two online applications:



Moodle is our 24/7 learning management system. Developed in Western Australia, it's an international success story, used in thousands of schools and universities across the world. We've been using it for ten years, and it has become the core of all teaching and learning in the school. Every subject has its own Moodle course, consisting of resources such as documents, links, learning games, audio and video, along with activities like forums, wikis, quizzes and interactives. It's also the place where student work is submitted and returned after marking. Needless to say, we take privacy and security very seriously, and access to SIDE's Moodle is restricted to enrolled students, who are issued with login details when they commence at SIDE.

Other aspects of school life occur through Moodle. **Essentials** (Years 10 to 12) and **Launchpad** (Years 6 to 9) are where secondary students start at SIDE, and these courses serve as reference and information sources for students throughout the school year. The OTL team works closely with SIDE Student Services to update and manage Essentials and Launchpad.



Moodle is also the place where students access live, online lessons with their teacher using the Department of Education's new web conferencing platform, Webex. SIDE teachers deliver about 4000 lessons every month from our Leederville campus to students all over Western Australia and beyond. This means there are many technical challenges, and the OTL team works very hard to ensure online lessons are a smooth, simple experience for students and teachers alike.

It's not just lessons that are delivered through **Webex**. The OTL team delivers online cyber-safety training for students, and works with other areas of the school to ensure guest speakers and special events can be accessed by our students no matter their location.

“ The OTL team has a role in just about every aspect of the SIDE experience. With so many things to deal with, it's just as well we love what we do! ”

WELCOME to the 2019 school year.

Currently we have 124 home based and travelling students enrolled in primary. Families are located in over 19 countries around the world.



WEBEX: We used Saba for many years as our online teaching and learning system. This year, Webex has replaced Saba and everyone is adapting to the new platform. Students are enjoying talking to their peers and teachers in real time.

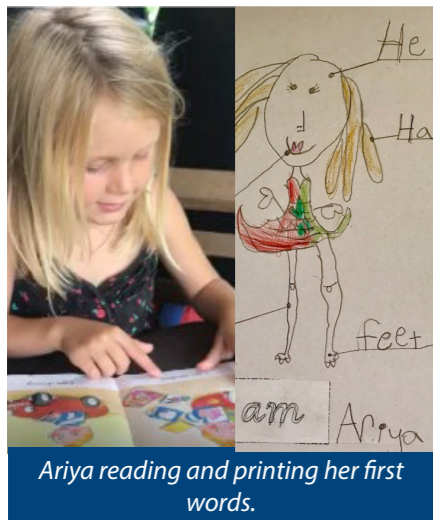
▶ EARLY CHILDHOOD

The foundations for successful learning are established in early childhood. This may be the first year of formal education for many of our students in ECE. Being both the parent and home tutor is challenging but it is also very rewarding.

“ We have found that organisation is the key to success. Three top tips are:

- Establish a routine and a suitable work space
- Preparation for the day's work is essential. Read the lesson notes prior to the lesson
- Make a timetable with your child.

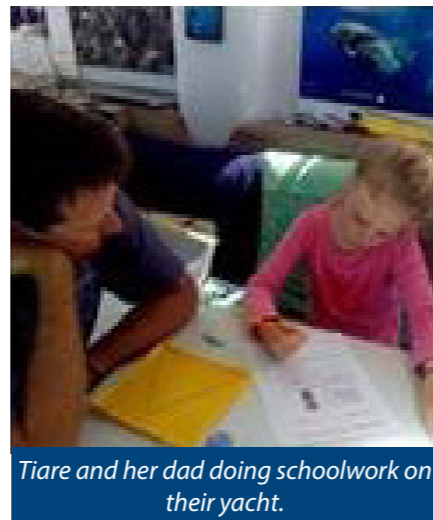
”



Ariya reading and printing her first words.



Students enjoying the hands on activities.



Tiare and her dad doing schoolwork on their yacht.

▶ MIDDLE PRIMARY

In Webex lessons laptop/computer screens have become interactive whiteboards and our students have become adept users of the tools.

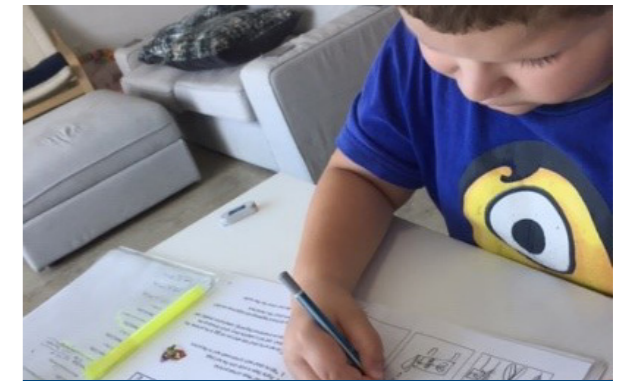
Cyber Safety encapsulates all online activity, therefore our focus for Term One was on Cyber Safety. Students learnt how to stay safe online and the steps needed to protect themselves.

MATHEMATICS

Tuesday is Mathematics in Webex where students showcase their mathematical skills to read questions, identify strategies to solve problems and check their work.

LITERACY

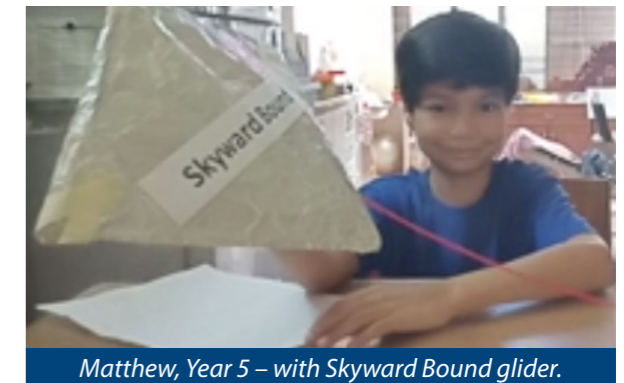
Our Literacy focus in Webex is based on speaking and listening, grammar, developing reading skills and strategies, as well as sharing work and ideas. During thinking skills online, we like to give our students opportunities to think outside the square.



Javan, Year 3 - practising his narrative planning.



Jonathan, Year 3 - with his insect Diorama.



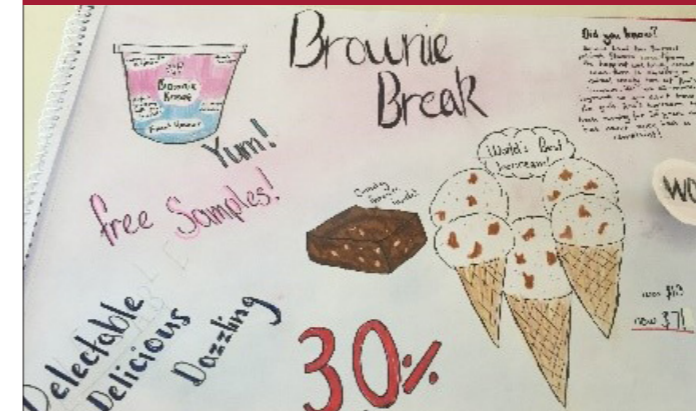
Matthew, Year 5 - with Skyward Bound glider.

▶ UPPER PRIMARY

The Year 5 and 6 Webex sessions have been very successful, averaging 15 students per session. This is a large Webex class and students are remembering and using the four classroom rules of Patience, Participation, Perseverance and Politeness.

The Upper Primary ballet cohort has made a fabulous start to 2019. The students, with the able assistance of their home tutors, have quickly settled into the demanding full-time ballet and distance education routine. It is pleasing to have received work of such a high quality so early in the year.

In the Year 6 work module 'Adventure', students created a food product and a flyer to promote their product.



Over the Summer break the SIDE Library staff said goodbye to long time library technician, Michael Bate, and welcomed a new staff member Luke Mitchell.

► NEW LIBRARY RESOURCES

This term the Library Resource Centre added two new online resources to the library collection:

LEARNPATH is an exciting new curating tool added to the LRC Oliver Catalogue. It provides a digital platform to create, publish and share rich learning guides and other content to support the curriculum and present focused information and resources for improved educational outcomes.



WORLD BOOK ENCYCLOPAEDIA'S EBOOK collection includes highly illustrated, engaging titles that support a span of curriculum areas and reading levels. A link to the World Book Encyclopaedia's ebook collection can be found in the **Research** section of the LRC Moodle.



► VIDEO TUTORIALS AND HELPSHEETS

SIDE Library Resource Centre have a brand new **help section on the SIDE website**, with video tutorials and helpsheets to assist students with research and referencing as well as using the library services and subscriptions. Find out how to search the library catalogue, create a bibliography, use Wikipedia for research, and much more.



► INFORMATION LITERACY LESSONS

This term Information Literacy lessons have assisted students to develop their skills in researching information to support their current studies in Science and Humanities and Social Science. A focus of the Information Literacy lessons was on the correct citation of sources and how to use the Online Referencing Generator (ORG) which can be found in the LRC Moodle Research section. If you require any assistance please contact us at: library@side.wa.edu.au or 9242 6303. Felicia Harris, Liz Allen, Amy Rosato, Luke Mitchell.



► WIDE READING PROGRAMS

YEAR 7-10: This term in the English Wide Reading program, students have been participating in a hands-on Webex session learning how to search the SIDE Library Catalogue for books, ebooks, audiobooks and other resources. After completing a short in-class survey about their reading interests, students were shown how to head to the catalogue to search for a book or resource that they find interesting, to then share and discuss with their class members. Participating in this activity encouraged students to learn about different book formats (and how to tell which is which), how to tell if a resource is available, how to manage their password, how to borrow a resource, where to go for help later if they need it, and get some great book recommendations from their peers.

LEARNING SUPPORT: This term Wide Reading lessons were conducted with Learning Support students in years 7-10. The Wide Reading lessons started with students having a Book Chat about what they have been reading lately and students made some fantastic recommendations. The Wide Reading lessons in Term One focused on introducing students to the Library Resource Centre catalogue, and the ebook and audio ebook collections. During the lesson students were able to borrow an ebook, and they had fun as they personalised the layout of their ebook to suit their individual needs.

PRIMARY 5/6: Primary Year 5 and 6 Wide Reading lessons introduced students to the Orbit catalogue and also to ebook providers Overdrive and Wheelers. Students had a lot of fun as they personalised their Orbit log-in page to suit their individual taste. Students have been busy borrowing ebooks.

AUTHOR ONLINE - BRENDAN RITCHIE

Side Library Resource Centre hosted two presentations by WA author Brendan Ritchie on Wednesday 20th February. The visit was planned in consultation with the English Department. Two one hour sessions were planned and organised by English and Library staff with Brendan. He presented to Years 11 and 12's. The focus for the first session was Character Development in which Brendan focused on character motivations, flawed characters and believable dialogue. The second session was on The Importance of Setting wherein Brendan looked at inspiration for settings, setting as an antagonist and writing dystopian and post-apocalyptic settings. Each session included Brendan sharing excerpts from his young adult novels Carousel and Beyond Carousel. Carousel is about four young adults trapped inside Carousel Shopping Centre when the entire population of Perth disappears. Beyond Carousel follows their discoveries of a very different, very dangerous Perth once their imprisonment is over and they face a new world. [Read more online.](#)





▶ HOW DO WE SUPPORT STUDENTS

▶ WHAT DO WE DO?

The student coordinators (SCs) and school psychologists are responsible for all aspects of establishing and monitoring educational programs, student and supervisor support and career education.

All student coordinators have a teaching role in their area of specialisation. There are seven teachers of **Careers and Workplace Learning** within the Student Services team.

STUDENT COORDINATORS

- Assist with all aspects of enrolment and getting students started
- Provide advice on student courses and pathways
- Monitor student achievement and attendance
- Assist with tertiary education and post school career options
- Monitor student wellbeing

Senior secondary parents and supervisors are encouraged to ask students about messages they receive through the **Moodle Essentials** course. Noticeboard messages contain timely and important advice and information including scholarship opportunities, TISC updates and university entry information.

▶ FOCUS 2019

SIDE Student Services have created successful **partnerships** with approximately 150 schools. Staff will continue to support student learning and provide pathways to university and training.

Traditionally, Year 12 students have been provided with the opportunity to purchase the Leavers jackets. The offer of a SIDE branded garment will be extended to all students who wish to purchase a SIDE T-shirt. This year will also see the roll-out of a SIDE Dress Code for students onsite.

▶ CAREERS

The Year 11 and 12 Foundation Careers courses are now on offer.

Enrolments in Careers courses continue to grow as schools and parents recognise the value in the skills and knowledge acquired for job searching.

▶ WORKPLACE LEARNING

TEACHERS

Gay Tierney, Shane Murray, Anne Calabro, Jane Bourke. Workplace Learning (WPL) provides students with the opportunity to gain skills in a workplace situation. In 2018 the program was very successful with over a 100 students enrolling. A significant number of Year 10 students enrolled providing a solid foundation for developing core skills for work and early career exploration activities which can be built on in Years 11 and 12.

School Based Traineeships (SBTs) enable students to combine schooling with employment in their industry of choice. They involve a partnership between the school, employer, the Department of Training, a Registered Training Organisation and the student.

In 2018, eleven Year 11/12 students commenced or completed SBTs in a wide range of industries. A focus for 2019 is to Implement new DoE Workplace Learning Guidelines linked to the new Duty of Care Policy.

Finally, an exciting opportunity exists to investigate a WPL partnership with the CSIRO in an online work environment "Virtual Workplace". Students are placed in teams across Australia, which will include a CSIRO Supervisor and Manager.

▶ DID YOU KNOW?

The **Student Subsidised Travel Scheme** can provide financial and practical assistance for targeted Year 12 students to attend WACE revision seminars.

Financial **Assistance for Isolated Children Scheme** (AICS) may be available to parents of full time SIDE students studying from home or within a school. For more information, contact your SIDE student coordinator or visit.

<https://www.humanservices.gov.au/individuals/services/centrelink/assistance-for-isolated-children-scheme>.

▶ STARTING AT SIDE IN 2019

With the introduction of a new live learning platform, Webex, the Student Services team offered SIDE induction in Term 4 2018. This initiative proved successful in improving the 2019 start to SIDE experience.

A total of 40 sessions were conducted, delivering to 145 students in 19 schools. Some schools had multiple sessions. Feedback from Pannawonica Primary School was: *"They were very excited after last week's lesson. Thank you for engaging our kids and making their first experience of SIDE an exciting one."*

Parents and supervisors are encouraged to talk to their SC if they are having trouble getting started, communicating or getting organised.

“ The regional visit program allows teachers to have face to face contact with students. Student engagement in their courses improves when students meet teachers and teachers understand the context in which students work. ”

SCHOOLS & LOCATIONS VISITED THIS TERM

GOLDFIELDS

Laverton School,
Leinster CS, Menzies CS,
Norseman DHS

KIMBERLEY

Broome SHS, Derby DHS,
Halls Creek DHS,
Kununurra DHS,
La Grange RCS,
St Mary's Broome,
Fitzroy Valley DHS,

MIDWEST

Dongara DHS, Exmouth DHS,
Meekatharra DHS,
Mt Magnet DHS, Mullewa DHS,
Pia Wadjari RCS

PILBARA

Hedland SHS, Karratha SHS

SOUTHWEST

Albany SHS, Australind SHS,
Bethel CC, Bunbury SHS,
Collie SHS, Dalyellup College,
Grace Christian Bunbury,
Hope CC, Kearnan College,
Mt Barker CC, North Albany SHS,
St Josephs College Albany

WHEATBELT

Central Midlands SHS,
Kellerberrin DHS
Mukinbudin DHS, Narrogin SHS,
Northam SHS, Quairading DHS



Dane Robertson at La Grange RCS with Maths teacher Ron Evans



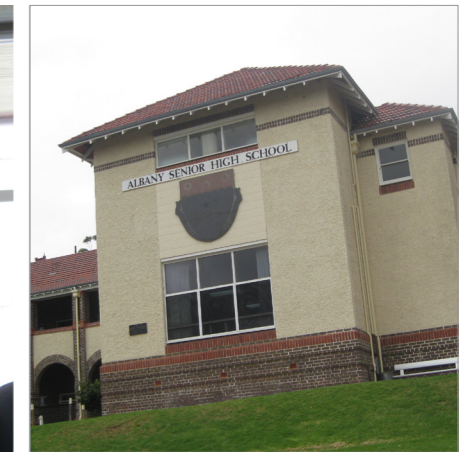
Paul Tournay working with students on a Science investigation.



HPE teacher Jane Bourke visited ATAR students at Grace Christian School



Year 10 student – Tekira



Albany SHS



SIDE teachers Adele Clarke (HASS), Cathy Lamers (English) with the SIDE supervisor Renee Even at Central Midlands SHS.



Bailey at Quairading DHS



Meekatharra DHS



Mt Magnet DHS – SIDE room

“ Workplace Learning (WPL) provides students with the opportunity to gain skills in a workplace situation within their community. The SIDE WPL coordinators conduct a comprehensive visit program across WA where they build strong community and industry partnerships. ”

WORK LOCATIONS VISITED THIS TERM

KIMBERLEY

Gordon Downs Station,
Springvale Station

MIDWEST

Ajana, Denham,
Geraldton, Jurien Bay,
Kalbarri, Meekatharra DHS,
Mt Magnet DHS,
Shark Bay

PILBARA

Coral Bay, Onslow

SOUTHWEST

Albany, Mt Many Peaks,
Walpole, Waroona,
Wellstead

METRO

Gingin, Katherine Mantle
Performing Arts
Academy

WHEATBELT

Bulyee, Corrigin,
Dalwallinu DHS,
Hyden



Mukinbudin



Bulyee



Mukinbudin



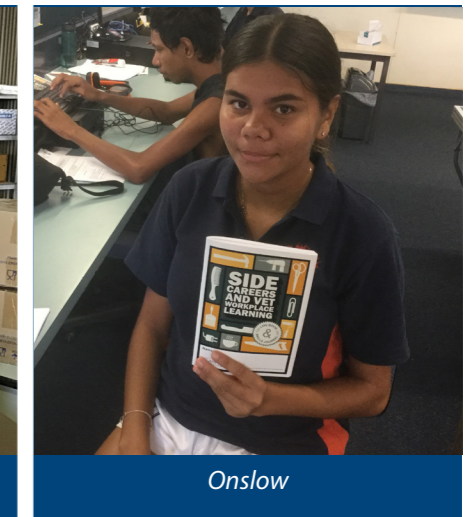
Waroona



Corrigin



Corrigin



Onslow



Mukinbudin



Hyden



Mukinbudin



Mukinbudin



Mukinbudin

WHERE ARE THEY NOW?

During the Centenary last year there was a lot of interest from former students in what is happening at SIDE now and their former teachers and classmates. We have created this new section of the newsletter to share some of our graduates' stories.

STORM SANDERS is a former SIDE student and the inaugural interviewee for this newsletter.



Go to [our website](#) to find out:

- When Storm graduated from SIDE.
- What did Storm do after finishing school?
- What is Storm doing now?
- How did SIDE prepare Storm for life after school?



Professional tennis player and coach.

JACK PADDLES TO VICTORY



[Jack Choate](#) had a fantastic performance at the Senior Canoe Slalom Nationals in Victoria.

NIKITA EXCELS IN MODERN PENTATHLON



[Nikita Mawhirt](#) has been a member of the two WA teams competing at national championships early this year.

TAYLAH ON TOUR



[Taylah Preston](#) will complete in the ITF World Junior Tennis Qualifying Tour in April.

L' INTERNATIONAL GYMNIX



[Two SIDE students](#) were chosen to represent Australia and competed in L' international Gymnix event.

THE SOLAR CHALLENGE



[Year 8 students](#) have been discovering what makes the fastest solar powered car using STEM principles.

HALOGEN YOUNG LEADERS DAY



[Six Year 12 students](#) participated in the one day conference at the Perth Convention Centre.

LEWIS SHINES IN ASDAN COURSES



Lewis from Carnarvon Community College achieved his ASDAN Workright certificate in 2018 and is now working on his Animal Care short course and Independent Living.

SIDE AWARD POINTS

★★ BRONZE ★★

- | | |
|------------|-------------|
| Connor W | Frances C |
| Liam B-C | Jessyca F |
| Owen M | Emily M |
| Laura S | Justine M |
| Lili-Mae N | Amara McD-M |
| Seaton S | Karl B-S |
| Olivia D | |

★★ SILVER ★★

- Laura S

SIDE

TERM 2 CALENDAR

29 APRIL

TERM 2 BEGINS

TEACHERS - SCHOOL DEVELOPMENT DAY

30 APRIL

TERM 2 BEGINS - STUDENTS

9-15 MAY

EXTERNALLY SET TASKS (SIDE)

14-17 MAY

NAPLAN (SIDE) - OFF-SITE FROM WEEK 4

4-14 JUNE

YEAR 11 AND 12 ATAR EXAMS

5 JULY

TERM 2 ENDS



SCHOOL OF ISOLATED & DISTANCE EDUCATION

Office: 164-194 Oxford Street Leederville WA 6007

Postal Address: PO Box 455 Leederville WA 6903

Website: www.side.wa.edu.au



[facebook.com/DistEdWA/](https://www.facebook.com/DistEdWA/)



[sideschoolwa](https://www.instagram.com/sideschoolwa)