



SCHOOL OF ISOLATED & DISTANCE EDUCATION

INSIDE NEWS



IN THIS ISSUE

- ▶ [Inside SIDE 3](#)
- ▶ [Arts & Technology 4](#)
- ▶ [English 8](#)
- ▶ [HASS 10](#)
- ▶ [HPE 12](#)
- ▶ [Languages 14](#)
- ▶ [Learning Support 16](#)
- ▶ [Mathematics 18](#)
- ▶ [Science 20](#)
- ▶ [Online Teaching & Learning 22](#)
- ▶ [Primary K-6 26](#)
- ▶ [Resource Centre 28](#)
- ▶ [Student Services & Careers 30](#)
- ▶ [Regional Visits 32](#)
- ▶ [Workplace Learning 34](#)
- ▶ [Students In Focus 36](#)
- ▶ [Leavers Celebration 38](#)
- ▶ [Calendar 40](#)
- ▶ [Social Media Info 40](#)



Rebekah from Mukinbudin DHS on work placement with Erika



Year 12 Leavers cutting the cake

“ Online learning
Innovation
Excellence ”

INSIDE SIDE



Justine Daly
Deputy Principal

Term 4 is extremely busy for parents, students and teachers. As well as the completion of assessments many students have been visited by SIDE teachers as part of the regional contact program. While it is tempting to think about the holiday break, the year is not quite over and there are still things to think about with regard to your child's schooling:

- enrolling for the first time or re-enrolling
- checking Booklist requirements
- visiting Parent Connect to download your child's report.

The [SIDE website](#) can link you to resources related to each of these topics. For information specifically related to parents click on the [Community](#) block on the SIDE homepage.

We congratulate all our students on their efforts this year. We recently hosted a Year 12 Leavers event at the Leederville campus and posted Year 12 Award Winners on the SIDE website. K-11 Awards Winners will be released on the SIDE website by the end of the school year.

We also congratulate the 2019 Hall of Fame Inductee, Gwenyth Graham AM who was presented with her medallion by Tamsin Cook in the recent Leavers and Award Winners celebration.

We wish all our students, their families, SIDE Supervisors and partner schools a happy and safe holiday and look forward to welcoming you back in 2020.

Deputy Principal

////////////////////

WISHING YOU ALL THE BEST FOR THE FESTIVE SEASON AND A HAPPY AND SAFE NEW YEAR FROM THE TEAM AT SIDE



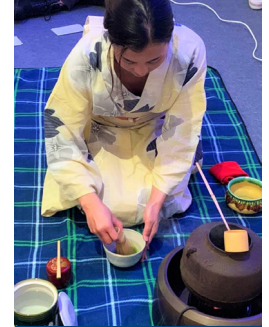
ARTS & TECHNOLOGY

► YEAR 9 FOOD

This semester in Year 9 Food, we have been looking at International Food. Our recent focus has been Japanese food and customs. We were very lucky to be able to participate in a Japanese tea ceremony conducted by Ai Kamiya, who is also SIDE's Science laboratory technician.



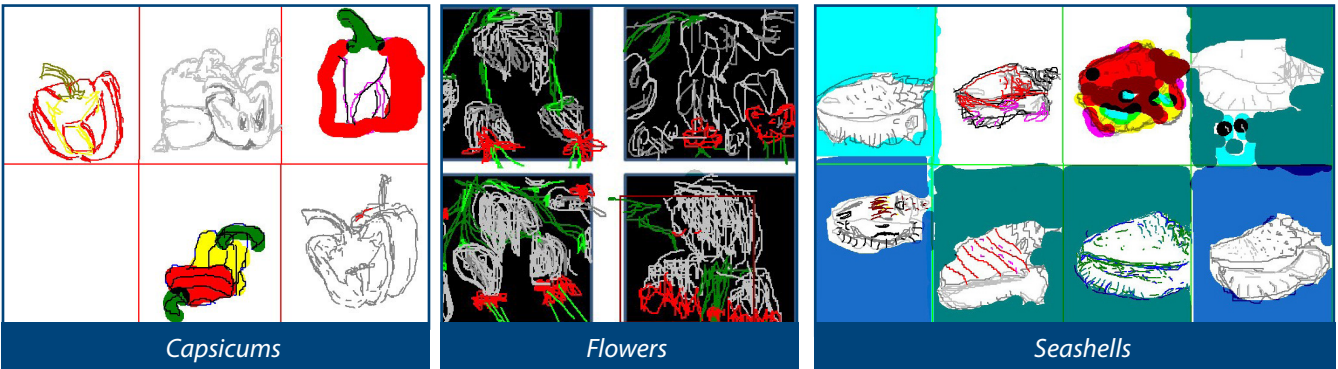
Students participate in Japanese tea ceremony



Ai Kamiya

► YEAR 9 ART

Year 9 students explored natural objects in their Term 3 Lino Printing project. They drew flowers, leaves, nuts and even animals that they saw around them. In Webex classes, they were able to see their work develop alongside the work of others in the class. This year we have had an exuberant energetic group who are all keen to develop their creative side. Here is a snippet of their online Webex drawings.

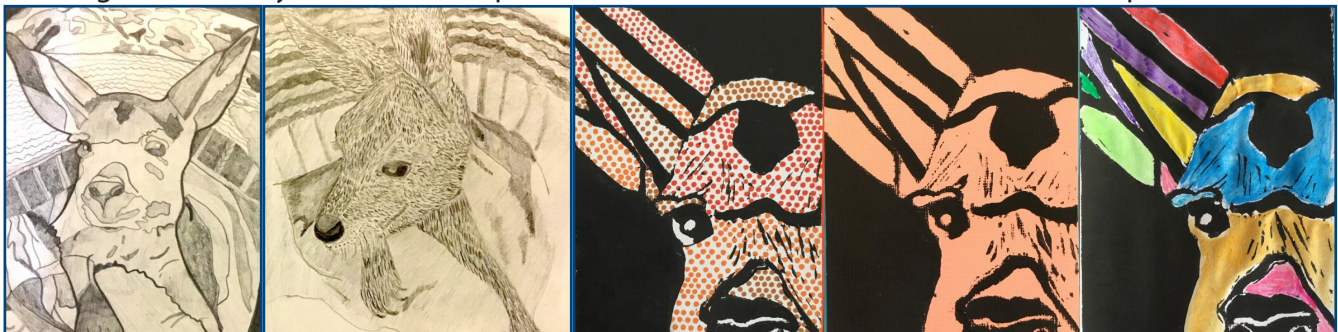


Capsicums

Flowers

Seashells

Catherine produced some wonderful drawings and prints. She did some effective observational drawings of a wallaby called 'Iris' and produced some wonderful hand-coloured card prints.



Catherine

▶ YEAR 10 PHOTOGRAPHY

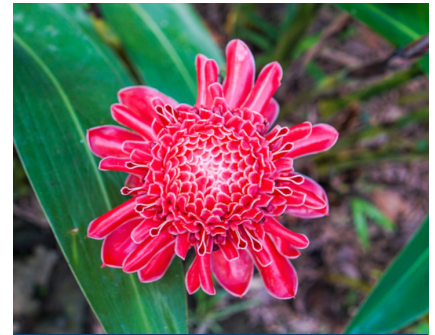
A photographic task that students have been working on has been on the topic of nature. The following images are examples of their work.



Amber



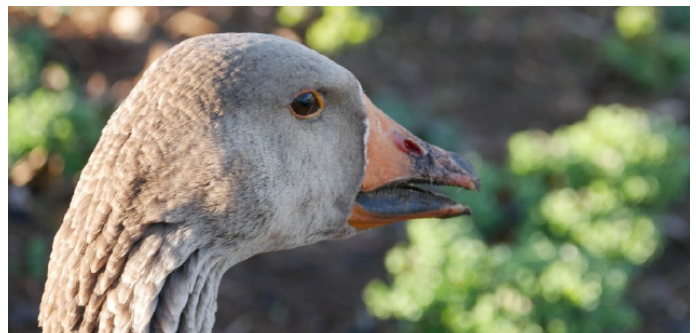
Gabriel



Danielle



Jesse



Sophie



It's ok to ask for help.

 **Lifeline** Saving Lives
Crisis Support. Suicide Prevention.

Laura



Kya



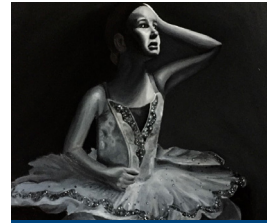
▶ YEAR 10 ART

Laura and Kya's work are examples of Pop Art inspired posters.

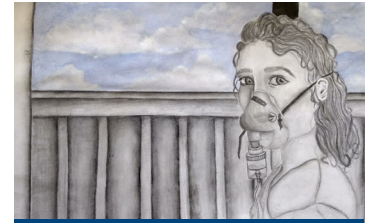
ARTS & TECHNOLOGY

▶ YEAR 11 ART (ATAR)

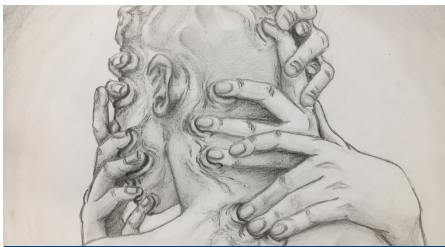
This class is smaller than the Year 12 ATAR but has shown as much talent and potential in their art making. Below is a sample of their final art works. The Semester 2 topic is 'Identity' so they have all explored this in their own way and in different media.



Elinor



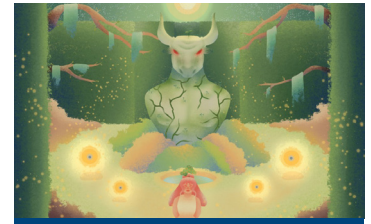
Lilly 'Self Portrait'



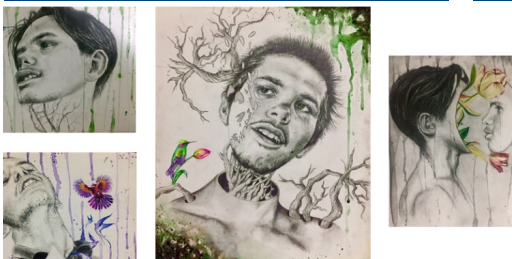
Amelia 'Malleable identity'



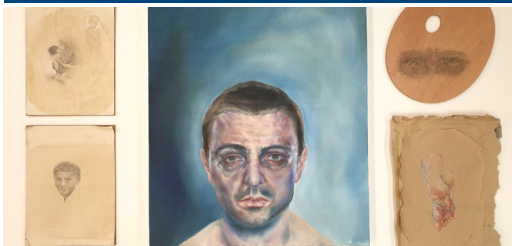
Hannah 'Night and Day'



Talian 'The Minotaur's Judgement'



Leia 'Earthbound'



Nikki 'Into The Abyss'



Bree 'Farmer's dramas'

▶ YEAR 12 ART (ATAR)

This year, the Year 12 Art students came from a diverse range of contexts consequently the range of artwork created this year is splendidly different, engaging and thought-provoking. This group has represented SIDE well in all major student exhibitions this year including St. George's Art exhibition, META 2019 at Central TAFE, Young Originals at ECU Mount Lawley. Leia, Senay and Nikki all had artworks in these exhibitions. Nikki was also the winner of the Canning Art prize for the student Painting section this year. As this year draws to an end, it must be said that it has been one of those years when we reflect on how wonderful a year it has been, and why visual art in young people's lives is as important as ever. At left are some works from the Year 12 ATAR class.

▶ YEAR 12 PHOTOGRAPHY

Nadia's photos show a Cubist influence



► VET OPPORTUNITIES AT SIDE

VET qualifications provide an opportunity to develop workplace-specific skills and knowledge designed to meet current and future employment demands. They are nationally recognised, and are relevant throughout Australia.



Whitney - Certificate III Business

SIDE offers a number of in-house courses, taught by SIDE staff, but delivered in partnership with various registered training organisations. In 2020, these will be:

- Certificate II in Business
- Certificate II in Financial Services
- Certificate II in Information, Digital Media and Technology
- Certificate II in Sport and Recreation
- Certificate II in Skills for Work and Vocational Pathways
- Certificate II in Applied Language (French or Japanese) – note that this cannot be used for Certificate II WACE requirements

In addition, some fee-for-service qualifications are available, with fees required to be paid prior to enrolment.

Further details of all these qualifications are available on the [SIDE website](#) or follow the links in the 7-12 Curriculum section.

SIDE students may also access a large range of qualifications across many industry areas, delivered at TAFE colleges throughout the state. This year, SIDE students have successfully completed:

- Certificate II in Rural Operations
- Certificate III in Aviation (Support Services and Operations)
- Certificate III in Business
- Certificate III in Education Support
- Certificate III in Music Industry

Another excellent option for students is to combine school studies with training and employment by engaging in a school-based traineeship (SBT) or apprenticeship (SBA). Current SBT/SBAs at SIDE include students working in the construction industry, business, sport and recreation, hospitality, retail services and mobile plant technology. Past students have completed qualifications in automotive servicing, aquaculture, community services. If you would like further information about any of these opportunities, please contact either the VET Coordinator, Jennifer Dobner on 9242 6827 or by email at Jennifer.dobner@education.wa.edu.au or your Student Coordinator.



Kolby - Certificate III Mobile Plant Technology

▶ CELEBRATING REMOTE AND REGIONAL YEAR 12 SUCCESSES

VERNA

We are celebrating the success of La Grange Remote Community School student, Verna Baksh, who achieved a B grade in 12 General English this year. Verna worked hard to achieve this fantastic result and the Bidgydanga and SIDE school communities are immensely proud of her efforts.



Verna



Lucy Brookes-Kenworthy and Tricia

TRICIA

We are also celebrating the accomplishment of Tricia Reyes, whose self-motivation, discipline and preparation has seen her achieve a C grade in 12 ATAR English. She is the first Year 12 graduate in over a decade at Leinster Community School and together with Leinster CS we recognise her achievement.

▶ ON-GOING PROFESSIONAL LEARNING: INNOVATION SHOWCASE

English staff member, Silvana Patorniti, attended the two-day Innovation Showcase at Perth Convention Centre. It was a highly engaging conference with leaders in technology and industry sharing their expertise about the future of the workforce. A number of schools also showcased their work with the Department's Innovation Partnerships project and it was great to see the practical and successful integration of technology that impacted student learning in so many positive ways. A central theme throughout the two days was the importance of fostering empathy, curiosity and creativity in our students in preparing for the world of tomorrow.



▶ NEW STAFF - JULIE HILLIN

In 2020 Julie Hillin will be joining the English teaching team, working in the new Year 11 EAL/D Foundation course. She is an EAL/D specialist teacher who has experience working with the development of resources for schools and teachers, as well as teaching EAL/D students in Intensive English Centres and Years 11 and 12. She started working at SIDE this year to develop and write the new 11 EAL/D Foundation Course. Julie believes in the rich range of cultural and linguistic diversity her students bring to the two-way process of teaching and learning.



NEW YEAR 11 ENGLISH AS AN ADDITIONAL LANGUAGE OR DIALECT COURSE

The new Year 11 English as an Additional Language or Dialect (EAL/D) Foundation course has been constructed and will be available from 2020 to students who speak English as a second language or as an additional language or dialect. These students come from diverse linguistic, cultural and educational backgrounds. They may be bi-dialectal students, including Aboriginal

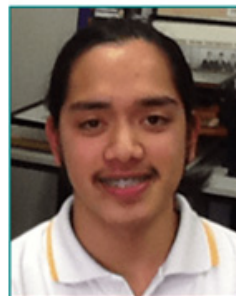
students who speak Aboriginal English (AE), a creole, or one or more Aboriginal languages. They may also be newly arrived in Australia and from a range of formal or informal schooling backgrounds.

The course builds on the wealth of cultural and linguistic knowledge, as well as life experience, that students bring to their study of Standard Australian English (SAE).



OFFERING GREATER CHOICE

Flexibility to meet individual learning needs



HUMANITIES & SOCIAL SCIENCES

► HASS COMPETITION

Many of our students enter HaSS related competitions on a regular basis and have enjoyed considerable success. We are very proud of their endeavours.

A number of SIDE Year 12 ATAR Geography students entered the Australian Geography Competition which aims to encourage student interest in Geography and to reward student excellence. This year several of our students achieved significant success. Ryan from Narrogin Senior High School achieved a 'High Distinction' which meant that he was in the top 6.9 percentile of Australian contestants.

Other students from Coodanup College and East Kimberley College achieved 'Credit' results. All other SIDE students achieved good results.

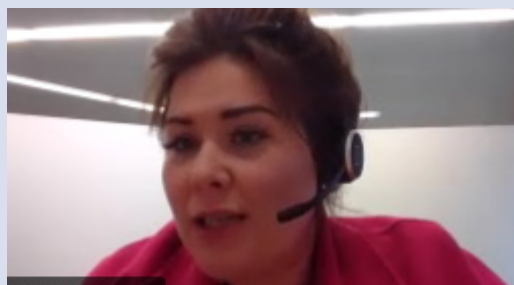
Well done to everyone who entered the competition. A big 'thank you' to Tracy Sterling, Lindy Precious and Adele Clarke for facilitating this worthwhile experience. We encourage students interested in Geography to participate in 2020.



Geography Competition Success- Ryan

► GUEST SPEAKER – BRONWYN SOUTHEE, URBAN PLANNER

In September the Geography ATAR Year 12 students had the opportunity to speak with Bronwyn Southee, an urban and regional planner currently working in Victoria.



Bronwyn Southee

Bronwyn provided valuable insights into planning strategies implemented in Melbourne and compared these to those in the Perth metropolitan area. Using Webex Bronwyn presented the session from Victoria, while students participated from around Western Australia and Cocos Island. The Geography students appreciated the time taken by Bronwyn to enhance their knowledge and that they were able to benefit from her valuable information prior to their final exam.

► GRADUATION AT LEINSTER COMMUNITY COLLEGE

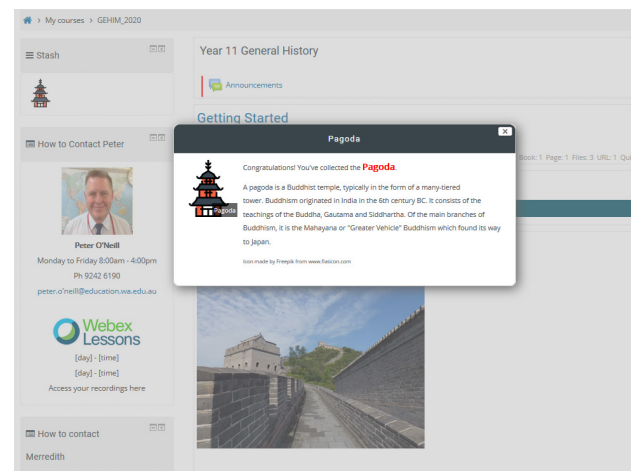
To celebrate the graduation of Year 12 student Tricia Reyes, SIDE teachers Tracy Sterling and Lucy Brookes-Kenworthy were invited to Leinster Community College. Tricia has consistently worked well to completed five years of full-time schooling through SIDE. Her Year 12 courses included ATAR English, Japanese, Chemistry, Human Biology and General Essential Mathematics. We were honoured to celebrate this special occasion with Tricia by presenting her with a SIDE Leavers Certificate and the Year 12 Student Services Award. A well-deserved acknowledgement of her hard work and dedication to her studies.



Tricia and Tracy

► NEW 2020 MODERN HISTORY GENERAL YEAR 11 MOODLE COURSE

Peter O'Neill, Meredith Southee and Finn Jekabsons are developing a new Year 11 General History Moodle course which optimises learning and fun. This new course features Stash and numerous H5P interactive learning opportunities to improve the learning experience and develop content understandings. Stash allows teachers to embed rewards throughout the course. As students complete the activities, they can find and collect the rewards. The new course is designed to enhance literacy and will assist students achieve their OLNA levels of language usage.



► CONTINUING HASS WITH SIDE IN THE SENIOR YEARS?

If the answer is YES, it is a good idea to purchase your textbooks and to contact the relevant teacher so you can commence pre-course reading.

The HaSS teachers wish all their students, their parents and guardians, and SIDE supervisors a lovely, relaxing, long school break.

HEALTH & PHYSICAL EDUCATION

▶ YEAR 8 HEALTH

The Year 8 Health students have studied the impacts of alcohol use and social connectedness this term. For their task they were required to create a website that addressed the barriers, the benefits and risks related to social connectedness, and strategies to increase an individual's level of connectedness.

Click the example of a [student's website](#) below with a link for further information.

'Because We Are Better Together'

▶ YEAR 9 HEALTH

This term we have been exploring the range of Complementary and Alternative (CAM) healthcare available. As part of their assessment students created a brochure on a CAM healthcare of their choice and this also gave them the opportunity to show off their design skills.

Introduction to Acupuncture

History

Acupuncture is an ancient Chinese medicine that involves inserting very fine needles into particular points. The first relation to acupuncture started about 6000 years BC, and involved sharpening stones and/or bones for the treatments. Acupuncture works with the energy flow in your body, known as 'Qi', the energy flows in your body is suppose to determine balance and health.

Further Info

Contacts

Boolin Acupuncture & Chinese Medicine Centre - (08) 9228 8828

Ping Ming Health - (08) 0161 8254

Sabrina Pikes

Reflexology

And according to University of Minnesota - The reflexologist's application of pressure to feet, hands, or ears sends a calming message from the peripheral nerves in these extremities to the central nervous system, which in turn signals the body to adjust the tension level. This enhances overall relaxation, brings internal organs and their systems into a state of optimum functioning, and increases blood supply.

<https://www.takingcharge.csh.umn.edu/explore-healing-practices/reflexology/how-does-reflexology-work>

What is reflexology?

Reflexology is a type of massage that involves applying different amounts of pressure to the feet, hands, and ears. It's based on a theory that these body parts are connected to certain organs and body systems. People who practice this technique are called reflexologists.

And according to University of Minnesota - The reflexologist's application of pressure to feet, hands, or ears sends a calming message from the peripheral nerves in these extremities to the central nervous system, which in turn signals the body to adjust the tension level. This enhances overall relaxation, brings internal organs and their systems into a state of optimum functioning, and increases blood supply.

<https://www.takingcharge.csh.umn.edu/explore-healing-practices/reflexology/how-does-reflexology-work>

Feet reflexology chart

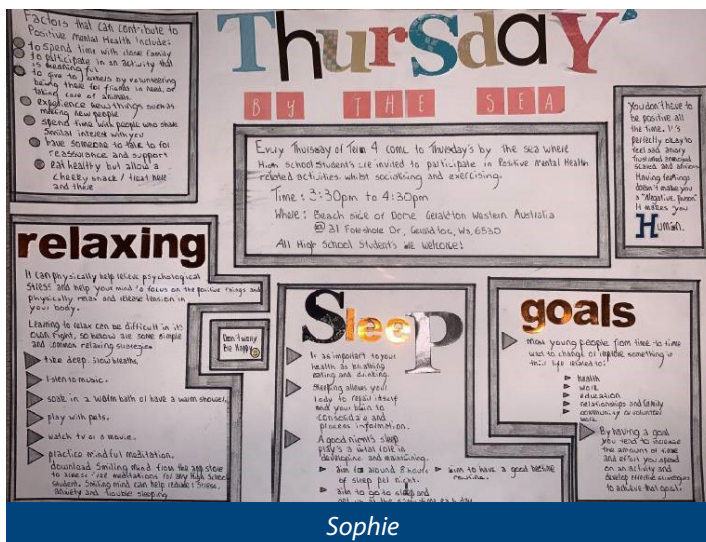
Head/Brain, Eye, Ears, Throat, Nose, Throat, Central Spine, Thyroid/Parathyroid, Stomach/Pancreas, Duodenum, Gallbladder, Liver, Adrenals, Kidneys, Bladder, Lumbar Vertebrae, Sacrum, Coccyx, Pelvis, Uterus/Vagina, Ovaries, Prostate, Testes, Lower Back/Lower Arms, Feet

Useful Resources for Complementary and Alternative Healthcare

- www.healthdirect.gov.au/complementary-therapies-overview
- www.betterhealth.vic.gov.au/health/conditionsandtreatments/complementary-therapies
- www.cancer.gov/about-cancer/treatment/cam

▶ YEAR 10 HEALTH

This term, students have been focussing on the parts of a health promotion campaign, with the goal of enabling them to interpret information presented and apply it to their own lives as applicable. The students completed a model mini health campaign for a health issue of their choice.



Campaign for Healthy Eating

Task 8

Unhealthy eating is an issue that occurs in many places around the world. Raising awareness about healthy eating is very important because it educates people about the benefits of healthy eating and problems of unhealthy eating which can help prevent health issues which could lead to death. Eating unhealthy can come with many problems and can also affect your wellbeing which could make you feel less happy in life.

Key messages: Healthy eating mixed with regular physical activity leads to a healthy lifestyle. Unhealthy eating can result in serious health issues which can lead to death.

Goals for the campaign

To influence readers to eat healthier and achieve:

- A decrease in the percentage of people aged 14-18 with problems due to unhealthy eating.
- An increase in the amount of people aged 14-18 aware about the benefits of healthy eating.



Facts and statistics about healthy eating

- Prevents major issues such as diabetes, cancer and heart disease. Healthy eating also helps improve your wellbeing and mood.
- During 2017, about 35% of the average energy intake is from unhealthy food including junk food.
- Children aged between 14-18 obtain about 41% of their total energy intake from unhealthy food.
- About 75% of people consume vegetables every day, but only about 7% eat a healthy amount of vegetables.

Health tips for healthy eating

- Swap white bread to whole-grain bread.
- Drink water instead of other beverages
- Eat fruit instead of drinking them.

Support agencies for healthy eating



For more information about the campaign, grab the brochure.

Nathan

▶ SENIOR SCHOOL

Farewell to all of the Year 12 students who finished at SIDE this year. We wish them the very best for their future.

The Year 11 ATAR students studied community development this term and how it is applied health issues. The students also worked hard to prepare for their end-of-year exam by improving their understanding of the course content and completing practice exams.

The focus for the Year 11 General students was on interpersonal skills. They studied preventative skills to enhance health, techniques for building cooperation and factors that influence decision making.

LANGUAGES

A number of school visits have taken place this term across the Language Department. Two of these visits were by Japanese teachers, Michael Sensei, Kathy Sensei and Kondo Sensei. Kondo Sensei is Yasuhiko Kondo (an exchange teacher from Hyogo Prefecture).

ONGERUP SCHOOL VISIT

Michael Sensei, Kathy Sensei and Kondo Sensei visited Ongerup Primary School in November for a Japanese day of language and cultural activities.



The SIDE program began with activities for the whole school. The students participated in a variety of language-based activities that included action songs, counting and kanji number games, kanji 'writing' using play-doh, storytelling via apron theatre and shodou (calligraphy) writing, as well as drawing a 'nezumi' (a mouse which featured in the story). Kondo sensei was very happy to be able to use his Japanese high school 'shodou' expertise to support the students.



After morning recess the focus was on the Year 1 to 6 students who study via SIDE. The emphasis was on reviewing their hiragana recognition and the 'fly swat' game and a more challenging kanji lesson on the days of the week. After practising writing these kanji, students were given a 'sensu' (fan) which they decorated with the kanji symbols, a nezumi and their name. They dressed in Japanese yukata and happi coats and posed with their sensu. Lunch was a small feast of 'onigiri' (rice balls), garnished with 'furikake' (flavourings) as well as a taste of 'nori' (dried seaweed), 'senbei' savoury biscuits and 'ocha' (green tea) followed by pocky dessert sticks. Oishikatta!

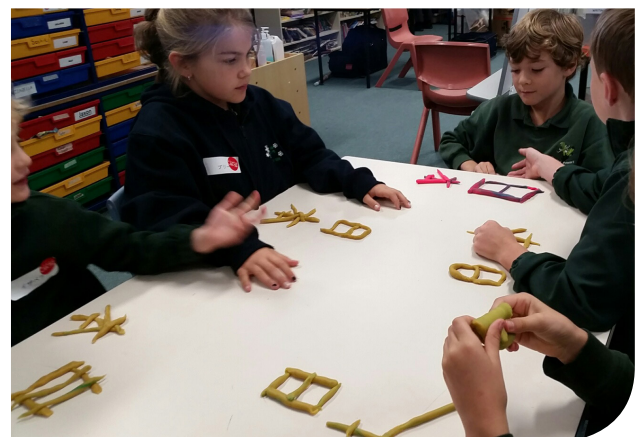


To conclude the visit, Kondo sensei dressed up in his 'kendou' outfit to introduce all the Ongerup students to the Japanese traditional sport of swordfighting (with a wooden sword). Students learnt to shout the traditional accompanying cry of 'men' as you attack your opponent and then had a chance to hit Kondo's helmet with the kendou stick. It was another fantastic visit to Ongerup which the students thoroughly enjoyed and it was well-supported by the Principal Mark Bruce and his staff. A surprise birthday cake for Michael was the icing on the cake for the teachers before the long drive home. Tanoshikatta!



ENEABBA PRIMARY SCHOOL

Michael Sensei, Kathy Sensei and Kondo Sensei also visited Eneabba Primary school. Some of the activities included making kanji words with play-doh. Numerous language games were played including 'fly swat' hiragana and counting games. Kondo Sensei gave a wonderful display of kendo and students had the opportunity to contest with Kondo Sensei. A delicious lunch of 'onigiri' was enjoyed by everyone. It was a fun day.



LEARNING SUPPORT

Term 4 has been very productive and busy for everyone, especially the teachers who were busy finalising their teaching and learning programs, culminating in the writing of student reports. Students are to be commended for their continued efforts with their learning programs. Term 4 certainly went fast and everyone is looking forward to a well-deserved holiday.

▶ REGIONAL VISIT TO MUKINBUDIN



Riley working

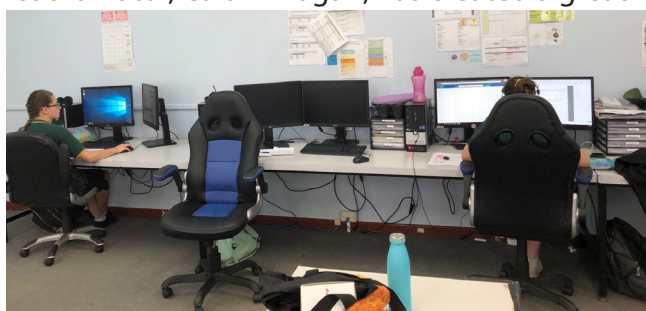


Sue Taylor and Riley

This term, three of our teachers Richelle Troode, Amy Hamilton and Sue Taylor visited Mukinbudin to work with our ASDAN Students.

Riley is a Year 8 student who is working on his ASDAN *Transition Challenge* course. As part of the course Riley has made a spinner for his ASDAN project. Riley enjoyed showing us the machine he uses and

how his spinner was progressing. The students have a lovely well-organised SIDE room and the coordinator, Caitlin Hogan, has created a great working space for the students.



SIDE room



Sue and Amy

We also worked with Amy, a Year 11 student, who is working on 3 ASDAN courses: *Workright*, *Hair and Beauty*, and *Animal Care*. For *Hair and Beauty*, we spent time doing the practical components of hand massage, applying nail polish and learning how to braid hair. Amy completed three hand massages and two nail polish applications and, by the end of the visit, she had started to get the hang of braiding hair. It was an enjoyable visit and a great opportunity to do some of the practical activities of our ASDAN courses.

YEAR 7 POETRY

This term the Year 9 students explored different techniques used when writing poetry.

Cheiro the Weiro by Lexie (Alexandra)

*Cheiro the Weiro went down to the pier
Wet and damp left in no fear
He saw something swimming
It came to a clearing
A shark was coming near*

Footy Finals by Robbie

*I bounced out of bed in the morning like a rabbit
Raced down to the footy oval like a goanna
Marked the ball like a seal
Ran as fast as a cheetah
I went up for the ball I jumped as high as
A kangaroo and ran as fast as flash
And then I tackled him like a raged bull
Then kick the goal then celebrity.*

Noises Of The Night by Murphy

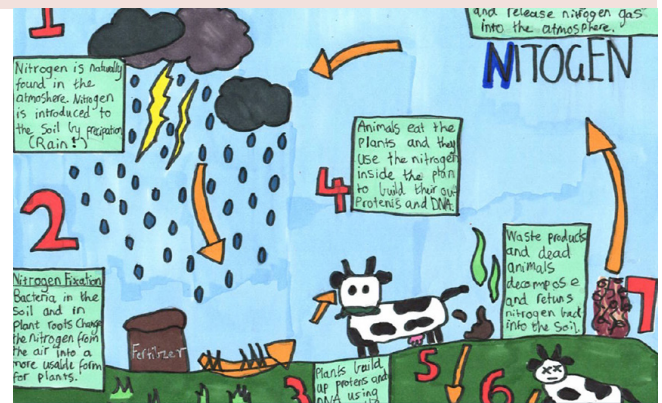
*It was a cold winter night, on that one rainy day.
The wind was so strong it nearly blew her away.
She closed all the windows and locked all of the doors,
Scared of what might be out there, roaming
between the halls.
Little did she know, there were no monsters outside.
The only one that exist, stay lurking inside.
She continued to pace throughout the house.
Her breathing became softer and as quiet as a mouse.
"Please whoever's out there, show me some mercy!"
She begged and she pled until things became blurry.
She ran upstairs and heard the closet door open,
The opened door revealed her puppy, Danny Bolten.*

▶ YEAR 10 GEOGRAPHY

The Year 10 students have been learning about the Nitrogen Cycle and the Greenhouse Effect. Laura has drawn diagrams of each one.



The Greenhouse Effect by Laura



The Nitrogen Cycle by Laura

MATHEMATICS

► REGIONAL VISIT TO PANNAWONICA

On Friday 15 November Mathematics teachers Angus Hogan and Giang Nguyen made a regional visit to Pannawonica Primary School to give some face-to-face support to secondary SIDE Mathematics students located there. The staff were very welcoming and gave us a quick tour around the school facilities before the students arrived. Pannawonica is situated in a hot, dry collection of beautiful mesa hills. The Primary School stands out as a green oasis in the red sand. It has well-irrigated grass play areas with big trees for shade. The forecast for the day was going to reach a maximum



Giang Nguyen with students from Pannawonica PS

in the high 40s so it was great that the air-conditioning in the classrooms was perfectly effective.

Distance education students attending the school, work out of two rooms: one for the Year 7 and 8 students; and another for the Year 9 and 10 students. As classes started for the day Giang went to work with the Year 7 and 8s while Angus took the Year 9 and 10s. They both really enjoyed their time in the school. Read their own accounts below.

Teachers' perspectives on the trip

Giang Nguyen's

I spent time with the Year 7s and 8s in their SIDE classroom. The photo shows me in the room where they have their Webex lessons. Behind us are desks separated by bookcases for each student.

This was my first regional visit since I took over this class during Term 3. It was so wonderful to have an opportunity to meet them, to talk to them, to review maths concepts, and to find out the challenges they were facing as independent learners. It was also excellent to be with the students when they had a Webex lesson, to see what is like on the "other side" as a student.

As a teacher new to SIDE this allowed me to gain a broader view of student needs, meeting them and working with them in person. The regional visits are invaluable, and I look forward to meeting more of my Maths students in the future. I was also pleased that students mentioned that I was one of a few female teachers who had visited them in Pannawonica.



Giang Nguyen with students from Pannawonica PS



Angus Hogan with students from Pannawonica PS

Angus Hogan

It was great to catch up with the Year 9s who I'd been teaching over the internet for the last 15 weeks. Before today they had been a voice on the phone or text on the screen. It was excellent to be able to teach a lesson in the same physical room with them, something they don't often get the opportunity to do. I was able to see how the online lessons work from their point of view. Each student has their own computer, so they don't have to share with any other students.

They each had set up their own workspace. I was

delighted to see printouts of the pages from some of my online lessons pinned to the wall above their computers to help them revise.

I spent some time one-on-one with each of the Year 9 and 10 students; preparing for an upcoming test for the Year 9s and assisting the Year 10s with their current investigation. They appreciated the instant feedback and even commented how good it was to have a Maths teacher in the room.

I took the opportunity to show the students how to use a pen tablet to do their Mathematics entirely on the computer rather than relying on the school's printers and scanners. They were a little shaky writing on the screen at first but after 20 minutes they were professionals with the device. They were keen for their school to get some as it simplified their workload greatly and allowed for quick feedback from myself back in Perth.

Our time there passed all too quickly and I missed out on the chance to help set up a touch TV the school had recently been donated. I saw the potential for the students to use this in their online work but reluctantly had to leave it for now until the next visit.

▶ MATHEMATICS IN YOUR WORLD

What is wrong in each of these images?

Answers to:

Gregory.piggott@education.wa.edu.au

No prizes, just the satisfaction of being observant.



SCIENCE

We are always very proud of our students' achievements, and 2019 is no exception. The Science team would like to thank all students, supervisors and parents for their hard work this year. Being organised and maintaining regular contact with teachers helps students succeed in distance education. Improvements in technology are also enabling some of the hurdles of distance learning to be overcome.

► CHEVRON - POWERING CAREERS IN ENERGY

This term students studying the SCSA Endorsed Course, Chevron – Powering Careers in Energy, attended the Chevron LNG Exploration Day at the RAC Arena. They were accompanied by SIDE Chevron teacher, Alex Berentzen. This was an excellent opportunity for students to meet Chevron professionals and some of the 400 students from across Western Australia who also study this course. The theme of the day was 'The Science of Liquefied Natural Gas'. It provided an insight into the different technologies used within Chevron and students participated in lots of hands-on activities. One of these was the use of virtual reality technology in training. An important element of the day was mock interviews with Chevron staff. Click [here](#) to find more information about this course which is available to students in Years 10, 11 and 12 at SIDE.



Mikayla at The Chevron LNG exploration day



Mikayla at The Chevron LNG exploration day

▶ ACTIVITIES IN TERM FOUR

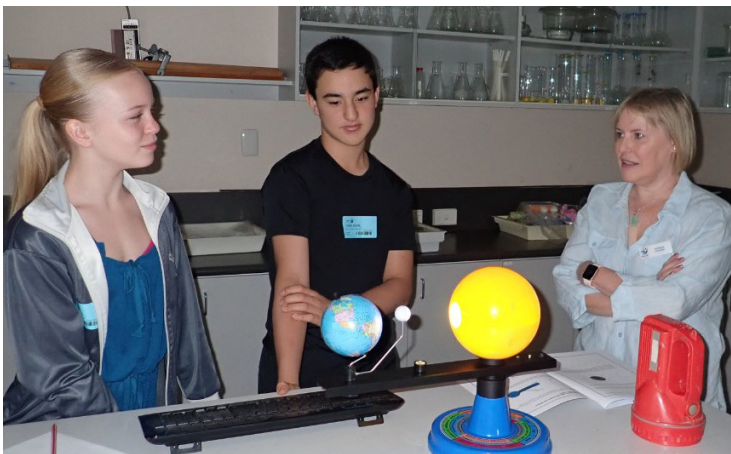
Term 4 has been busy for all of us; completing units, finalising exams and reorganising for 2020. Science staff have also been visiting schools and spending time with our students.

Diana Tomazos visited **East Kimberley College** to see the Year 11 and 12 Chemistry and Physics students.

Jim Marshall, Ai Kamiya and Alex Berentzen went to the **Shark Bay School** to explore STEM activities with the Science students.



Natalie Cooper regularly teaches the Year 7 ballet students in the SIDE Science laboratory.



Natalie, Savana and Eusebio exploring lunar eclipses

SCIENCE KITS - A REMINDER TO ALL STUDENTS

Your 2019 coursework should now be finished. **NOW** is the time to pack up the Science Equipment Kit you have been sent during the year, and return it to SIDE Dispatch. Please **follow the instructions** in the email you have been sent.

FAREWELL

For those students finishing with SIDE this year. We wish you all the best for the future. To returning students, have a great break and we will see you back ready to work hard in 2020.

ONLINE TEACHING & LEARNING

► MOODLE UPDATE: INCREASING ONLINE INTERACTIVITY

At SIDE our students work using a blend of online and traditional modes of learning. Teachers can blend these tools to suit the individual needs of each student. The benefits of online learning are enormous for SIDE students. Online technologies mean barriers to success are greatly reduced.

The Moodle Learning Management System is where much student learning takes place and at SIDE we are always looking for ways to improve learning experiences for our students. This year, SIDE has introduced a new Moodle plug-in called H5P.

H5P is a free, community-driven tool which makes it easy for teachers to create interactive learning experiences that can be placed directly into our Moodle courses to enrich student learning experiences. H5P currently has 44 different content types which can be utilised by teachers, including interactive videos, drag-and-drop activities, flashcards, memory games, quizzes, branching scenarios and much more.

H5P allows teachers to construct learning activities which more specifically meet the needs of students through differentiation by using content types such as branching scenarios, which enable learning to be tailored based on student responses to activities.

SIDE teachers have embraced this technology, and we now have over 2000 interactive learning experiences built with H5P embedded in our courses across the school. Students have enjoyed the new and varied methods of learning available to them.

Drag to arrange the images in the correct sequence

se lever se lever rentrer stabler dormir manger

Time spent
0.00
Total Moves
0

Check ShowSolution

Unscramble the sentence:

Je suis un méchant

Check

► GETTING STARTED AT SIDE 2020

New SIDE students: The 'Getting Started at SIDE' email (late in January 2020) includes login details for Moodle. It is vital that students login to Moodle as soon as possible and update their profile. SIDE teachers are unable to allocate students to their class groups until student profiles are completed. To get to Moodle, use the Quicklinks menu on the banner or the E-Learning tab on the [SIDE Website](#) and select SIDE Moodle (Secondary 7-12).

Continuing SIDE students: Should log in to Moodle at the start of the 2020 school year using their 2019 username and password.

▶ ONLINE SAFETY – ADVICE FOR PARENTS

'Keeping our kids safe online' was a focus in the Term 3 Newsletter. Since then the Office of the Australian government's eSafety Commissioner has updated its website to provide more advice to parents

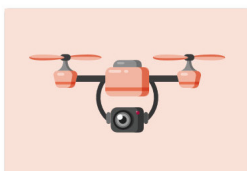


Included in the revamped website is a section on 'Skills and Advice' for parents including information on building digital intelligence in children and hard-to-have conversations.

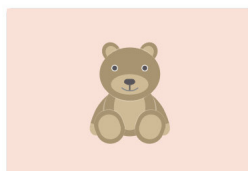
There is also some good advice about technology gifts, written specifically for Christmas, but useful more generally. Each type of gift includes an overview of what the section covers, an age guide, what to look out for, and how to stay safe.

Gift Guide

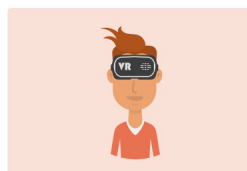
Be smart and secure when choosing tech gifts for children and young people.



Drones



Smart Toys



Virtual Reality

Skills and advice

Tips for managing online challenges.



Online safety basics



Good habits start young

PRIMARY K-6

Term 4 is a time for farewells and for planning for the new school year.

► ACKNOWLEDGING ACHIEVEMENTS - OUR ANNUAL AWARDS

2019 has been a rewarding year for the Primary staff and students. The success of our students is paramount, and it is wonderful to be able to celebrate their achievements and endeavours. Our annual Awards allow us to acknowledge the efforts of our home tutors and students. Teachers, home tutors and students are a team and we rely heavily on our home tutors for their valued input and feedback. Thank you to all our parents and carers for the time and effort they have put into their children's education.

Congratulations to all of our Award winners. We are very proud of you.

[Check out the list of 2019 Award winners.](#)

► FAREWELL TO OUR YEAR 6 STUDENTS

It has been a pleasure to have our Year 6 students as part of our school. Leaving primary school is a significant milestone in a child's life. It is a time filled with mixed emotions: a sense of pride in a school that nurtured and protected them through their early years, nostalgia as they look back over the countless happy, sad, proud and embarrassing memories of their journey through primary school, and excitement and nervousness as they anticipate the new opportunities, challenges and adventures that change brings.

We wish them all well in their future endeavours.

Brad Woodbrook and Janine Denner our Year 6 teachers, hosted a lunch in the last week of Term 4 to say farewell to the Year 6 leavers.

[Click here to read about our Year 6 Leavers.](#)



Some of the Year 6 Leavers celebrating the end of their primary schooling

► FAREWELL TO KATH MOORE

After 24 years teaching, writing and helping at SIDE, Kath is taking some well-deserved long service leave and then retiring. Kath began her distance education career working at SIDE Preparatory School in 1995 (now part of SIDE K – 12). She has experienced many changes in distance education, from pen and paper work presentation and snail mail, to Webex lessons and online marking. She has always demonstrated a positive attitude and a can-do approach.



Kath is a well-respected and caring teacher who is dedicated to her students achieving their best. Her support of students with a wide range of learning abilities and styles is evidence of her commitment to teaching. Her educational knowledge has been invaluable to her colleagues and the families she has worked with over the years.

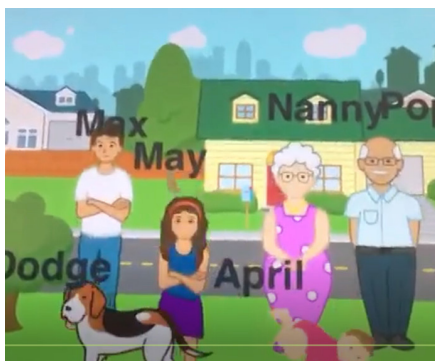
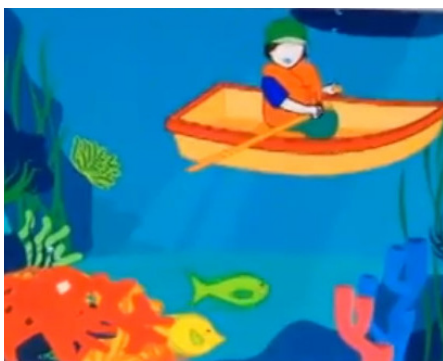
She is also an experienced writer of SIDE materials and her knowledge in the Mathematics area resulted in materials that are promoted as excellent teaching and learning models. She has supported our Primary writers over many years, giving feedback that ensured the products were aligned with the current curriculum, and that engaged students who were learning in a variety of situations.

I could fill the page with superlatives describing Kath's work as a teacher extraordinaire.

Kath is a very thoughtful colleague with a genuine concern for others. She provides strong community support through her volunteer work and no doubt will continue to do so when she leaves us. She will be missed by staff and families.

► SOME TERRIFIC WORK FROM OUR STUDENTS

The Year 4 students have returned some fabulous movies they have made as part of the *Living in a Digital World* module. Take a look.



PRIMARY K-6



Madeleine - lemon battery



Lemon battery



Deakin with lemon batteries

▶ DECEMBER / JANUARY OPENING HOURS FOR DROP OFFS AND PICK UPS

Reception at Building C will be open 23 – 24 December 7.30 – 11.00am. It will open again on 6 January, 2020 7.30 am – 2.30 pm Monday, Tuesday and Wednesday.

We look forward to working with our continuing and new students and families in 2020. Have a safe and happy holiday and we wish you all the best for 2020.

home Accommodation Price Things to do Info Contact

JOURNEY of a LIFETIME :

WHY GO FOR A CRUISE TO NEPTUNE? ...

NEW SUITS

COMFORT TRAVEL SHIP

LUX HOTEL

ROBOT COMPANION

INTERESTING FACTS...

What to bring?

What's on the menu?

Neptune store
www.neptunestore.com

NEPTUNE TRAVEL

INTERESTING FACTS :

- Neptune is 6x wider than Earth.
- Neptune is the smallest of the Gas Giants.

Neptune is the most distant planet on our solar system.
Discovered by our Laim le Verrrier, John Couch Adams, in 1846

NEW SUITS

- Light speed suit - to explore the planet faster.
- Oxygen a heart-on suit
- Large bag on suit
- Suction shoes
- Warm suit
- Ice glacier tour equipment

SPACESHIP

- Super Super light speed
- 8 people can go on it including pilots.
- Super good food
- Ice suction shoes
- Warm seats

LUXURY HOTEL

- Robotic assistants
- Heaters
- Emergency food
- Printer house

CONTACT:

© School of Isolated and Distance Education

Nathan in Year 5 is enticing us to travel to Neptune for a holiday

We have some wonderful artists!



Matthew, Year 4



Emma, Year 2 - Landscape with bear



Mira, Year 3 - Arty animals



Ariya and her fruit-a-licious creature.

▶ AUTHOR ONLINE - KELLY CANBY



Kelly Canby

Kelly Canby visited SIDE in Week 6 presenting two Webex sessions to SIDE Primary classes. Her visit was planned with the SIDE Early and Middle Childhood teachers.

Kelly presented Webex sessions for Pre-primary to Year 2 students and Year 3/4 students. Her background is in graphic design and she has published three picture books: *All the Lost Things*, *The Hole Story* and *Rodney*, with a fourth book to be released in early 2020. She has also illustrated for national and international authors.

Students in Webex library lessons this term prepared for her visit by sharing her stories and enjoying her colourful artwork, so Kelly's sessions were enhanced by student knowledge and enthusiasm. She discussed where her ideas come from and how she uses them to develop text and illustration. She told the students that "ideas come from ideas, come from ideas, come from ideas".

Kelly presented from the SIDE studio in Leederville. Using the webcam, she and the students drew her rabbit from *The Hole Story* and her character Phil Pickle. Students were able to use their webcams to show their illustrations to Kelly and the other students. The library promoted Kelly's visit through the LRC blog, Instagram and displays in the Library Resource Centre and received lots of positive comments from students, parents and staff.

Visit the Resource Centre home page to search for [Kelly's books](#) or the [Resource Centre blog](#) to find out more about the visit.

If you are interested in learning more about Kelly check out her [website](#).

▶ RED ROOM POETRY OBJECT UPDATE

One of SIDE's Year 6 students, Eleanor, was shortlisted in this year's Red Room Poetry Object competition! Her poem, *When Time Stops*, made it through to the final judging round. Congratulations, Eleanor!

All poetry submitted by SIDE students has been published online in Red Room's [Poetry Object Library](#).

The Red Room Poetry Object program at SIDE is a collaboration between SIDE Secondary English, the SIDE Library Resource Centre and SIDE Primary, coordinated by English teacher Susan Cullen and teacher librarian Amy Rosato who are supported by the OTL team.

► A NEW RESOURCE CENTRE ONLINE

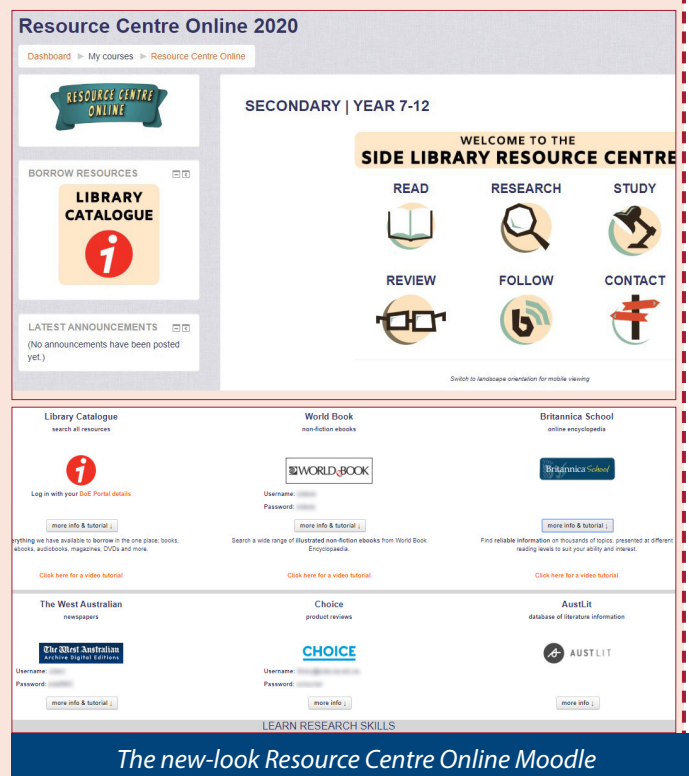
We have been working hard this term to give the Resource Centre Online in Moodle a fresh new look! Ready for launch in 2020, the new Resource Centre Online is the place to go for all reading and research needs.

There will be a special course each for primary, secondary and primary languages students. The link to each course can be found in the usual place in the Moodle or Link Dashboard.

We have incorporated a noticeboard so we can send out messages to all students about library events and new resources, and a book reviews forum so students and teachers can leave reviews of what they've been reading lately. 'More info' buttons on each page hide a short explanation of the resource, and will sometimes link to a video tutorial to assist students in using it.

Thank you to the SIDE students who have had input into the new courses, giving their valuable feedback after taking the draft version for a test-drive.

We are excited to make the new Resource Centre Online available to staff and students from the beginning of 2020 - please drop us a line at library@side.wa.edu.au to let us know what you think!



Resource Centre Online 2020

Dashboard » My courses » Resource Centre Online

SECONDARY | YEAR 7-12

WELCOME TO THE SIDE LIBRARY RESOURCE CENTRE

READ RESEARCH STUDY

REVIEW FOLLOW CONTACT

BORROW RESOURCES

LIBRARY CATALOGUE

LATEST ANNOUNCEMENTS

Library Catalogue search all resources

World Book non-fiction ebooks

Britannica School online encyclopaedia

The West Australian newspapers

Choice product reviews

AustLit database of literature information

LEARN RESEARCH SKILLS

The new-look Resource Centre Online Moodle

► 2019 ENVIRONMENT AWARD FOR CHILDREN'S LITERATURE

SIDE Library Resource Centre has shared and promoted the shortlisted and winning books in this year's Environment Award. It is an initiative of The Wilderness Society and supports quality Australian children's literature that foster a love of wild places and encourage a sense of responsibility for our natural world.

It was an exciting announcement of winners in Hobart when WA author/illustrator Michael Speechley was named the winner of the Picture Fiction category with *The All New Must Have Orange 430*. The winning books in each category are:

Non-fiction *Bouncing Back: An Eastern Barred Bandicoot* by Rohan Cleave and Coral Tulloch

Fiction *Maxi the Lifeguard: The Stormy Protest* by Trent Maxwell and David Lawrence

Picture Fiction *The All New Must Have Orange 430* by Michael Speechley

Search for these titles at <https://oliver.side.wa.edu.au/oliver/home/news>

For further information about the award go to <http://www.eacl.org.au/2019winners/>

STUDENT SERVICES & CAREERS

► STUDENT SERVICES TERM 4

SIDE provides a range of support services and resources which students, families and schools are encouraged to use. Student Coordinators in the Student Services team are a key contact and link between the student and/or school and SIDE teachers/parents.

The SIDE website is located at side.wa.edu.au.

K-6 PRIMARY ▾

7-12 ENROLMENT ▾

7-12 CURRICULUM ▾

The 7-12 ENROLMENT tab contains important information about eligibility and enrolment as well as other general information such as supervision, support, attendance, charges, booklists and financial assistance. Parents and supervisors are encouraged to read as much information as possible with the following two links a recommended starting point:

- [Getting Started – Fast Track to SIDE](#)
- [Parent Supervisors' FAQ](#)

► GNOWANGERUP DHS SNAPSHOT

Aaliyah Woods enrolled in Year 11 with SIDE via Gnowangerup DHS in mid-Term 3 2019. Complementing her SIDE studies, Aaliyah completed her Cert II Business in tandem with Impact Services, successfully achieving her WACE in 2019. Congratulations!

Fiona Gaze, Principal of Gnowangerup DHS recently wrote to Aaliyah's SIDE Student Coordinator.

"I had an amazing day last Friday with Aaliyah Woods who has completed her Certificate II in Business. She was mentored by Bronwyn from Work Link, as a trainee with Kim from Impact Services, and supervised by Kirsty from the Shire of Gnowangerup. It was an amazing group effort with excellent results. Aaliyah has worked really hard over the past year and it seems that it has paid off, with her being offered a position through Impact Services in 2020. What an achievement for Aaliyah! She is an accomplished young woman and I am sure all of the school community would wish her well in the completion of her Year 12 studies and into the future."



▶ ADIEU (FAREWELL) GAY TIERNEY



Gay Tierney

The Student Services team would like to acknowledge Gay Tierney on her retirement after 45 years of service in education. After undertaking numerous roles in teaching and education consultancy during her career, Gay has been integral to the Student Services team as a Student Coordinator and Workplace Learning specialist teacher at SIDE for the past 12 years.

Gay has an admirable work ethic and is highly respected by staff, students and families. An excellent communicator and always collaborative, she has formed trusted relationships which benefit students at SIDE and in schools and communities across the state. Her colleagues describe her as an excellent planner and forward thinker with high professional standards who always follows through on her commitments.

In her Workplace Learning role, Gay has contributed to improving the post-school outcomes of all her students. Gay has high expectations and students respond well to her 'tough love' approach. They describe her as supportive, helpful, genuine, encouraging and reliable. Gay will be much missed as a colleague and as a friend.

▶ IMPORTANT DATES 2019/2020

- Fri 6 Dec - Year 11 reports
- Fri 13 Dec - SIDE Orientation Day for 2020 new students
- Mon 16 Dec - Year 7 – 10 reports
- Thurs 19 Dec – WA 2019 WACE results and Universities Admission Advice Letters online
- Thurs 19 Dec – End of Term 4 for students
- 20 Dec 2019 to 2 Feb 2020 - School Holidays
- Mon 23 Dec – December round Uni offers available
- Mon 3 Feb 2020 – Term 1 2020 commences

▶ HAPPY HOLIDAYS!

As the end of the 2019 school year approaches, the Student Services Team would like to thank all students, parents, supervisors and teachers for their hard work and support throughout the year. From the Student Services Team, have a very happy festive season and holiday!

"For last year's words belong to last year's language and next year's words await another voice. And to make an end is to make a beginning" T.S. Eliot

REGIONAL VISITS

The regional visit program allows teachers to have face-to-face contact with students. Student engagement in their courses improves when students meet teachers and teachers understand the context in which students work.

LOCATIONS VISITED THIS TERM

GOLDFIELDS

Laverton,
Leinster



KIMBERLEY

Broome, Bidyadanga,
Kununurra

METRO

City Beach, Dianella,
Forrestfield, Kalamunda,
Morley, Perth,
Shenton Park, Swan View

MIDWEST

Denham, Kalbarri, Eneabba
Morawa, Shark Bay

PILBARA

Coral Bay, Hedland,
Onslow, Pannawonica,
Port Hedland

SOUTHWEST

Albany,
Bunbury

WHEATBELT

Beverley, Cadoux,
Esperance, Hopetoun,
Kellerberrin, Mukinbudin,
Ongerup



Sensei and student practicing kendo



Ongerup Primary School entrance

REGIONAL VISITS



Tricia's Graduation at Leinster



Morawa DHS students



Morawa DHS students with their teacher



Students from Shark Bay conducting an experiment



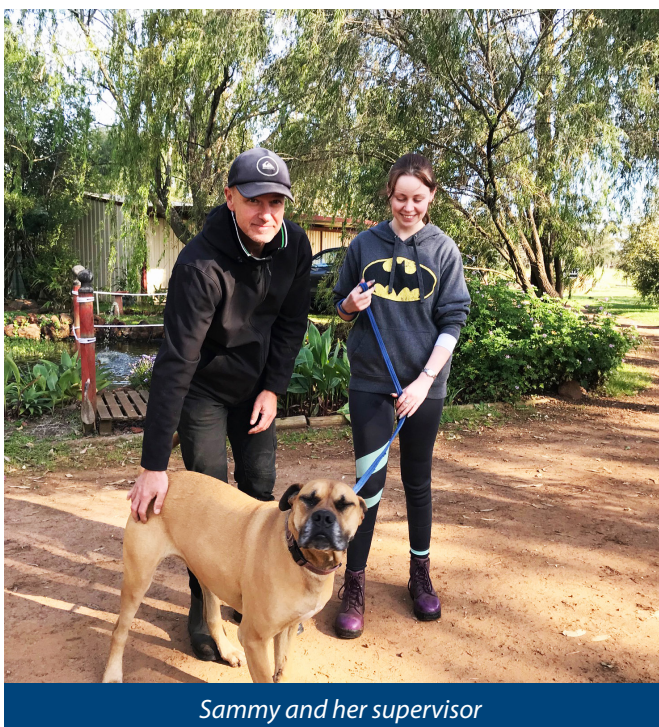
WORKPLACE LEARNING

SPOTLIGHT ON WORKPLACE LEARNING

This year has seen students access a wide range of workplaces for the SIDE Workplace Learning program.

SAMMY

Sammy completed her work placement at Marlee Country Kennels in Busselton. Sammy says the highlight of her placement was meeting and caring for the dogs. She has always been very fond of animals, so being able to work with them every day was, in her words, a delightful experience. One thing Sammy learnt through this experience was to step outside her comfort zone. She gained confidence in speaking to customers and staff.



Sammy and her supervisor



Sammy at Marlee Country Kennels

BERNARD

Bernard has been a valued staff member at the Ravensthorpe Community Resource Centre, where under the guidance of his supervisor he made a valuable contribution to community events. Bernard has thoroughly enjoyed his time in this work placement and next year aims to do a placement at the Ravensthorpe Shire to enhance his career prospects.

WORK LOCATIONS VISITED THIS TERM

KIMBERLEY

Broome,
Bidayadanga,
La Grange

METRO

Waddington

MIDWEST

Dalwallinu,
Denham,
Monkey Mia,
Mount Magnet,
Meekatharra,
Shark Bay

PILBARA

Onslow,
Pannawonica

SOUTHWEST

Albany
Walpole

WHEATBELT

Mukinbudin



Bernard with his supervisor



Bernard at Ravensthorpe CRC

STUDENTS IN FOCUS

ELITE SPORTS - TALIA GIBSON

Congratulations to Talia from SIDE's Elite Performance program who was invited by Tennis Australia to participate in an Asian B1 ITF (International Junior Tennis). She was also selected to represent Australia for Girls 16/Under to play in the WTF (World Tennis Federation) Future Stars event in China. Talia toured for a month from early October competing in Japan, China and Korea, and was a semi-finalist in three of these events. Currently ranked 1 in WA and 2 ITF in Australia for her age group, Talia is set to make her mark in the tennis world.

To cap the year off, Talia and her coach, Tate Roberts attended the John Newcombe Awards (for outstanding achievements in Australian tennis) on 2 December at the Crown in Melbourne as award finalists. They were respectively winners of the 2019 Female Junior Athlete Of The Year and 2019 Coaching Excellence Development awards. A fantastic achievement for both of them!



Talia with Ashley Barty ranked WTA World 1

2019 SIDE DUXES



Anjali Bhujun (Left)
Academic Dux

Whitney King (Right)
VET Dux

PRACTICAL APPLICATION OF ASDAN



Amy at Mukinbudin braided Richelle's hair for her *Hair and Beauty* unit

ELITE PERFORMANCE STUDENTS EXCEL



Elite Performance students.

YEAR 12 LEAVERS FAREWELLED



Year 12 Leavers and Award Winners celebrated the completion of their schooling.

SIDE AWARD POINTS

★★ BRONZE ★★

- | | |
|-------------|---------------|
| Maddison B | Craig C |
| Jack C | Trae F |
| Lara G | Krystal-Lee H |
| Ismail J | Millie M |
| Loki M | Amy M |
| Riley M | Catherine M |
| Thomaz M | Maraina P |
| Eve S | Stephens S |
| Laura S | Montoya T |
| Mackenzie T | Ella V |
| Jun WG | |

★★ SILVER ★★

- | | |
|-------------|-------------|
| Jenna G | Paige G |
| Abigail G | Emily G |
| Angela J | Nicholas M |
| Murphy M | Charlotte M |
| Rylee EO | James P |
| Sabrina P | Laura S |
| Teleisha VE | Connor W |

★★ GOLD ★★

- | | |
|-------------|----------|
| Karl BS | Tiah D |
| Arkenatta I | Connor W |
| Lawrence W | |

★★ PLATINUM ★★

- | | |
|-------------|---------|
| Christian A | Liam BC |
| Laura S | |

LEAVERS CELEBRATION



2019 Hall of Fame Inductee Gwenyth Graham AM receives her medallion from Tasmin Cook





SIDE

2020 TERM 1 CALENDAR

30-31 JANUARY

**TERM 1 BEGINS - TEACHERS - SCHOOL
DEVELOPMENT DAY**

3 FEBRUARY

TERM 1 BEGINS - STUDENTS

3-5 MARCH

SIDE OLNA

9 APRIL

TERM 4 ENDS - STUDENTS

SECONDARY ASSISTANCE SCHEME

you may be eligible for up to:
\$350

towards school expenses

The Western Australian Department of Education provides an allowance to assist eligible families with secondary schooling costs.

For more information please contact the Cashier on [08 9242 6323](tel:0892426323) or discuss with the student coordinator at the time of enrolment.



SCHOOL OF ISOLATED & DISTANCE EDUCATION

Office: 164-194 Oxford Street Leederville WA 6007

Postal Address: PO Box 455 Leederville WA 6903

Website: www.side.wa.edu.au



[facebook.com/DistEdWA/](https://www.facebook.com/DistEdWA/)



[sideschoolwa](https://www.instagram.com/sideschoolwa)