



Transferring Video from iPad to PC

Making videos for assignments on an iPad can be a great idea, but it is difficult to upload them to Moodle. Use these easy steps to transfer the video files from the iPad to a PC ready for upload to Moodle.

Note: These instructions are based on tests using an iPad 2. It is assumed that they will work on other models. It is recommended that you create a clearly marked folder on your PC to place the transferred video before beginning this process.

Step 1: Turn on your computer and log in

Turn on your computer, log in with your relevant details. Complete the start up.

Step 2: Turn on your iPad

- Turn on your iPad.
- Once iPad has completed start up, plug your iPad cable into your iPad. The other end of the cable should be a USB connector.
- Plug the USB connector into an available USB slot on your PC.

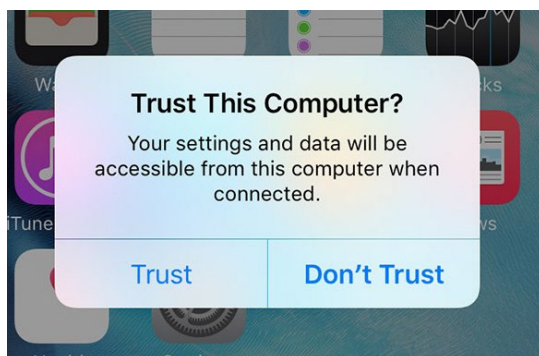
USB's plugged into extension cables or hubs may experience problems. It is always best to plug directly into a USB slot on the

Step 3: Driver installation

- The first time you connect your iPad, the computer may wish to install a **driver** on your computer. A **driver** is an application which allows two pieces of hardware to talk to each other, in this case the iPad and your PC. This will not damage your computer.
- If your computer asks for your permission to do this click on **Allow** or **Yes** whichever the case may be. Wait for driver to complete loading on your computer.
- iTunes may also attempt to load on your computer at this stage. It is not necessary to have iTunes running for this process so you may turn it off if you like.
- Once the driver has installed on your PC you should not have to complete this step again.

Step 4: Do you trust this computer?

- Your iPad should now display the following screen.

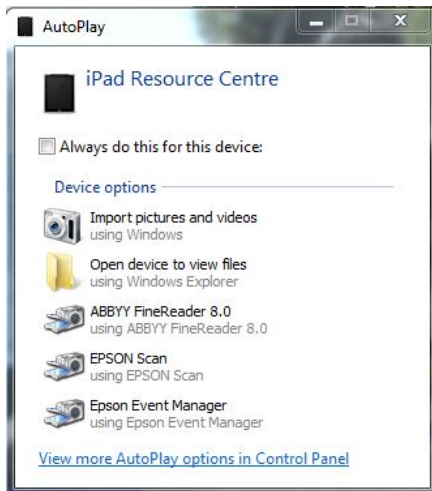


- Click on **Trust** and it will allow the device to complete the connection with your PC.

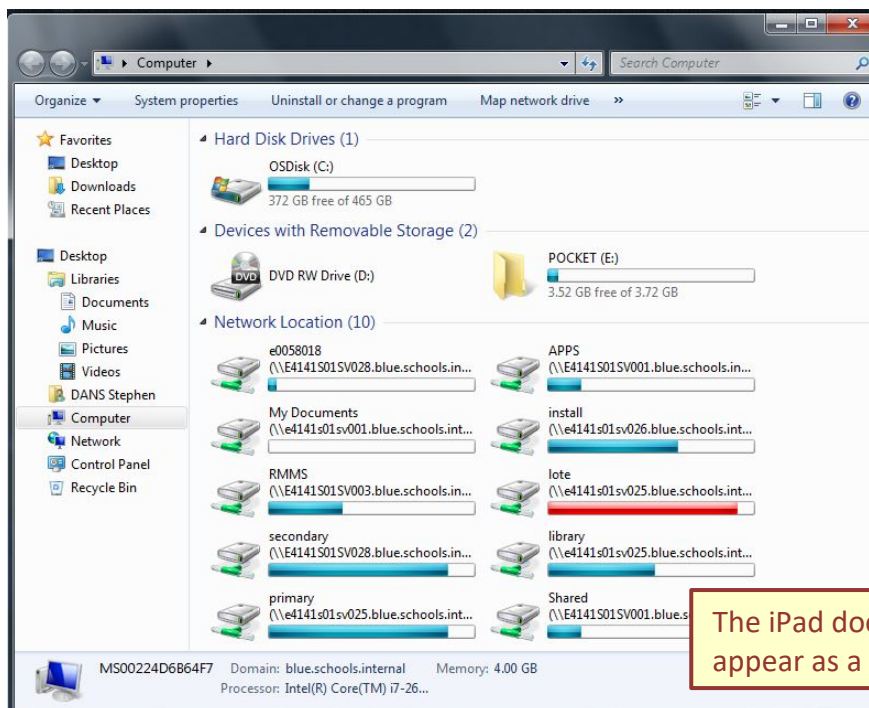


Step 5: Check to see if iPad appears on PC

- Your PC should now show the **AutoPlay** window on its screen.



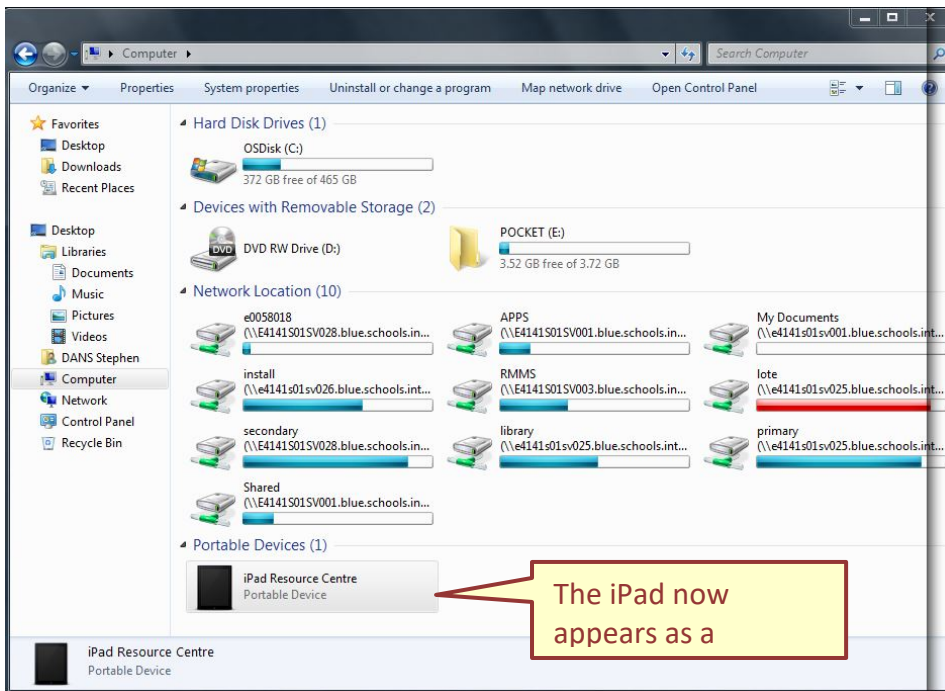
- If this does not appear on your screen, check that the iPad is displayed as a connected device on your PC.
- Click on Computer to check connected drives and devices.



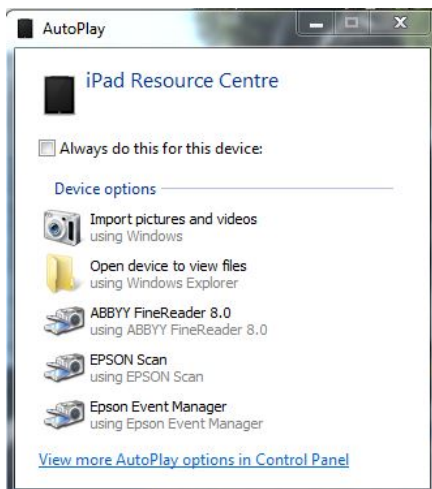
- If the iPad is not displayed, then the iPad has not connected.
- Try disconnecting the USB connector from the PC and reconnecting it.



- Your screen should now look like this:



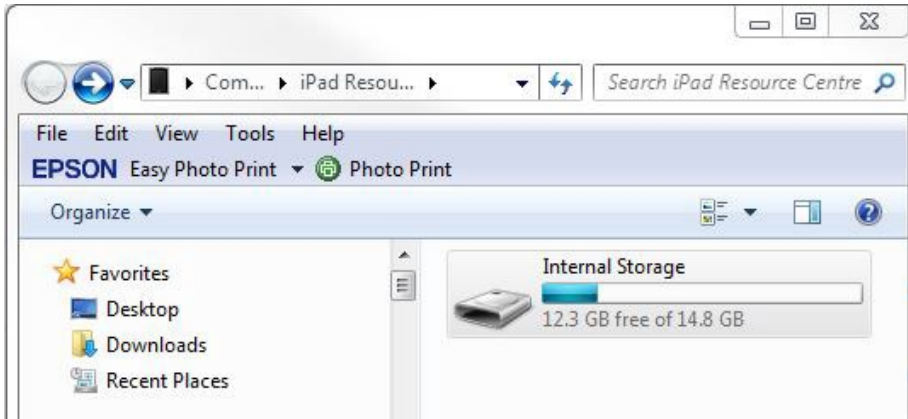
- The **AutoPlay** window on your PC should now appear on your screen.



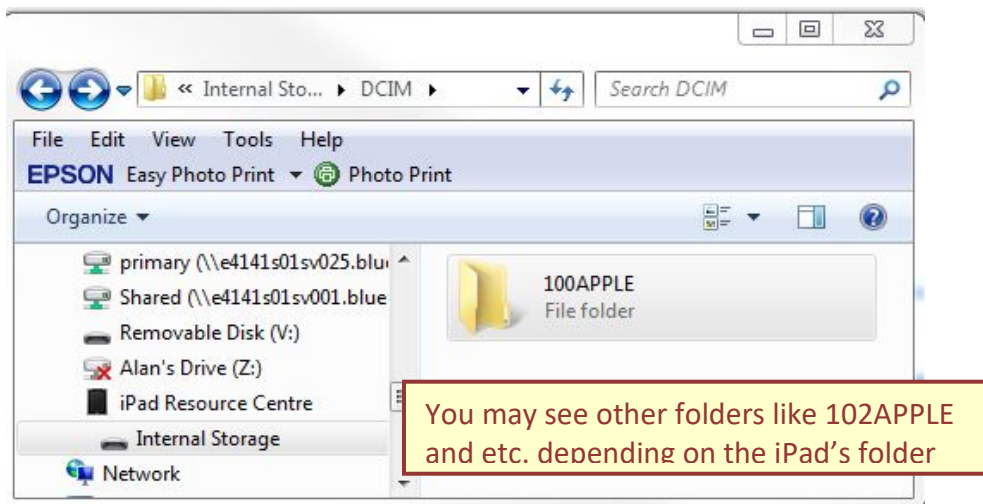


Step 6: Opening Autoplay and locating videos

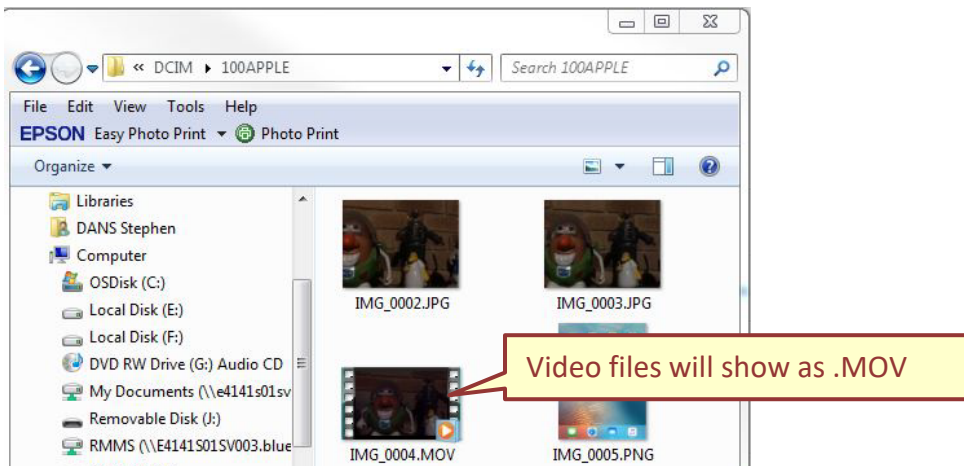
- Click on **Open device to view files**. The following screen should now appear



- Click on **Internal Storage** and the following screen should appear.



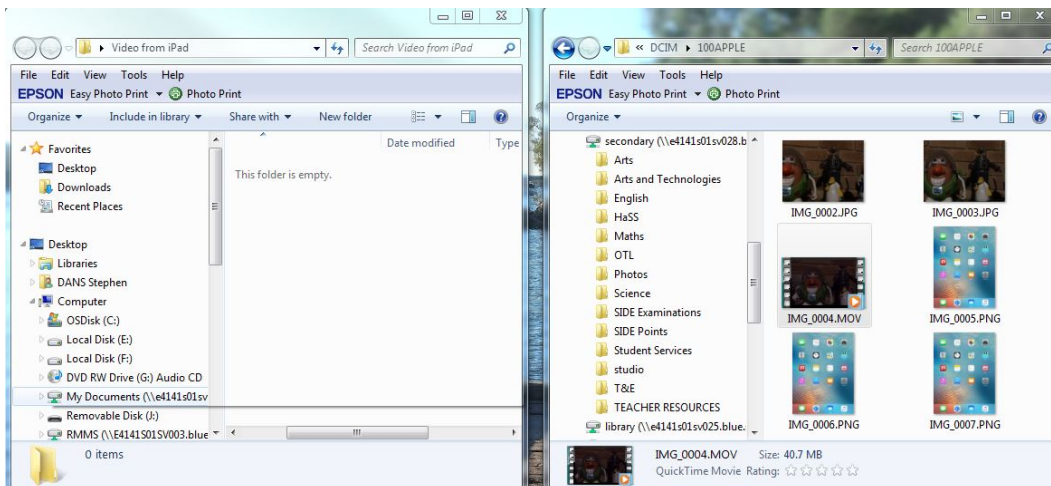
- If folders other than DCIM are present, only click on DCIM.
- Click on **100Apple** and the following screen should now appear.



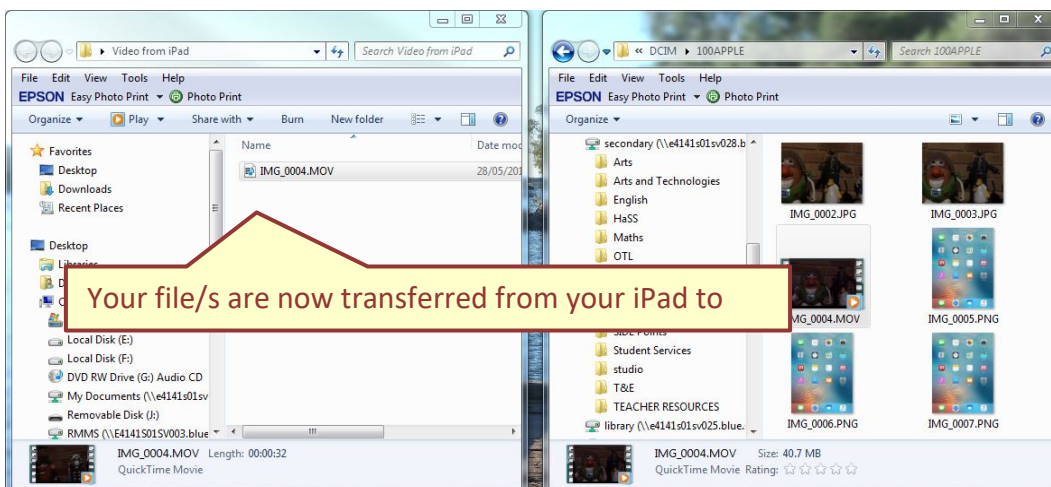


Step 7: Transferring files

- Identify the file you wish to transfer. You may transfer one or more files at a time. As mentioned at the beginning of this guide it is recommended to create a clearly marked folder on your PC prior to starting this process.
- You may either drag and drop the relevant files from the **DCIM-100APPLE** folder in to your clearly marked folder, or choose the copy/paste method. Either is OK.
- Prior to transferring the screen should look like the following.



- After transferring the screen should look like the following.



You can now disconnect your iPad from the computer.

Troubleshooting

- The next time you need to transfer a video from your iPad to a PC you should be able to see the AutoPlay window as soon as the iPad has completed connecting. If not, repeat the above process.
- In the event that your PC will not allow you to transfer files on to it (for protocol or permission reasons), plug a USB thumb drive of appropriate size in to a separate USB slot on your PC and retry transferring the files on to the thumb drive.
- As the files are not being placed on the PC directly this should work.

It may be necessary to reduce the size of your video prior to submitting it to your teacher. Please see [Use Handbrake to Reduce Video File Size for Uploading](#) to assist you with this.